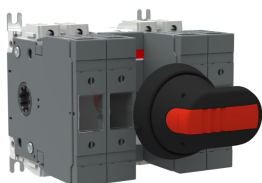


PRODUCT-DETAILS

# OS63GD22N1P

## OS63GD22N1P SWITCH FUSE



### General Information

Extended Product Type	OS63GD22N1P
Product ID	1SCA116729R1001
EAN	6417019488172
Catalog Description	OS63GD22N1P SWITCH FUSE
Long Description	Switch Fuses,Front Operated,4-pole,22 (Between the Poles),DIN,000,Handle and shaft included,Switched - With Solid Link

### Ordering

Customs Tariff Number	85365080
Country of Origin	Finland (FI)

### Popular Downloads

Data Sheet, Technical Information	1SCC311136D2703
Instructions and Manuals	1SCC311036M0212

### Dimensions

Product Net Width	138 mm
Product Net Height	112 mm

Product Net Depth / Length	121 mm
Product Net Weight	1.4 kg 3 lb

## Technical

Rated Operational Current AC-21A ( $I_e$ )	(500 V) 63 A (690 V) 63 A
Rated Operational Current AC-22A ( $I_e$ )	(500 V) 63 A (690 V) 63 A
Rated Operational Current AC-23A ( $I_e$ )	(500 V) 63 A (690 V) 63 A
Rated Operational Power AC-23A ( $P_e$ )	(220 ... 240 V) 18.5 kW (400 V) 30 kW (415 V) 30 kW (500 V) 37 kW (690 V) 55 kW
Conventional Free-air Thermal Current ( $I_{th}$ )	q = 40 °C 63 A
Conventional Thermal Current ( $I_{the}$ )	Fully Enclosed 63 A
Rated Impulse Withstand Voltage ( $U_{imp}$ )	12 kV
Rated Insulation Voltage ( $U_i$ )	1000 V
Rated Operational Voltage	500 V
Rated Short-time Withstand Current ( $I_{cw}$ )	for 1 s 2.5 kiloampere rms
Rated Conditional Short-Circuit Current ( $I_{nc}$ )	(690 V) 80 kA
Power Loss	at Rated Operating Conditions per Pole 7.5 W
Pollution Degree	3
Handle Type	Pistol handle and shaft included
Fourth Pole Position	Left Side
Fourth Pole Type	Switched - With Solid Link
Switches Operating Mechanism	22 (Between the Poles)
Position of Line Terminals	Top In - Bottom Out, Bottom In - Top Out
Fuse Size	000
Fuse System	DIN
Operating Mode	Front Operated
Standards	IEC 60947-3
Mounting Type	Base mounting
Number of Poles	4
Cable Cross-Section	2.5 ... 25 mm <sup>2</sup>
Terminal Type	Screw Terminals
Tightening Torque	3 N·m 4 N·m
Fuse Type	DIN

## Environmental

RoHS Status	Following EU Directive 2011/65/EU and Amendment 2015/863 July 22, 2019
-------------	--

## Certificates and Declarations (Document Number)

CCC Certificate	CCC OS32-63G_2016.pdf
Declaration of Conformity - CE	1SCC311136D2703
DNV GL Certificate	1SCC311125D0203
EAC Certificate	EAC OT_OTDC_OTL_OTP_OTR_OTU_OTE_OETL_OESA_OESC_OTM_OS_OSM_pd f
Instructions and Manuals	1SCC311036M0212
RoHS Information	1SCC311136D2703

## Container Information

Package Level 1 Units	box 1 piece
Package Level 1 Width	170 mm 6.7 in
Package Level 1 Depth / Length	190 mm 7.5 in
Package Level 1 Height	145 mm 5.7 in
Package Level 1 Gross Weight	1.5 kg 3.3 lb
Package Level 1 EAN	6417019488172

## Classifications

Object Classification Code	Q
ETIM 4	EC001040 - Fuse switch disconnecter
ETIM 5	EC001040 - Fuse switch disconnecter
ETIM 6	EC001040 - Fuse switch disconnecter
ETIM 7	EC001040 - Fuse switch disconnecter
WEEE Category	5. Small Equipment (No External Dimension More Than 50 cm)
E-Number (Sweden)	3172153

## Categories

Low Voltage Products and Systems → Switches → Switch Fuses

