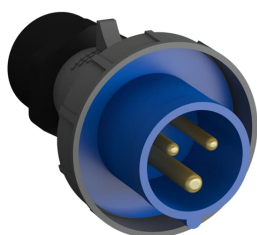


PRODUCT-DETAILS

# 216QP6W

## Ind. P&S#216QP6W



### General Information

Extended Product Type	216QP6W
Product ID	2CMA102296R1000
EAN	7392696022965
Catalog Description	Ind. P&S#216QP6W
Long Description	Plug, earthing sleeve position 6h, rated current 16A, IP67 watertight, 2-poles+earth, frequency 50-60 Hz, color code Blue, Screwless terminals

### Ordering

E-Number (Sweden)	E2404983
EAN	7392696022965
Country of Origin	Turkey (TR)
Minimum Order Quantity	10 piece

### Dimensions

Product Net Width	72 mm
Product Net Height	72 mm
Product Net Weight	0.167 kg

### Container Information

Package Level 1 Width	150 mm
Package Level 1 Depth / Length	280 mm
Package Level 1 Height	225 mm
Package Level 1 Gross Weight	1.853 kg
Package Level 1 EAN	7392696037723
Package Level 1 Units	box 10 piece

## Environmental

RoHS Status	Following EU Directive 2011/65/EU
-------------	-----------------------------------

## Certificates and Declarations (Document Number)

Declaration of Conformity - CE	2CMC700005D0001
Environmental Information	2CMC000072M0000
RoHS Information	2CMC700005D0001
REACH Declaration	2CMC700005D0001

## Additional Information

Additional Information	2P+E
Ambient Temperature	-25 ... 40 °C
Cable Cross-Section	1 ... 2.5 mm <sup>2</sup>
Cable Diameter	6 ... 16 mm
Cable Entry Position	Swivel
Color	Blue
Connection Type	Screwless
Degree of Protection	IP67
Frequency (f)	50 Hz 60 Hz
Function	Plug
Housing Material	Plastic (PA)
Invoice Description	Ind. P&S#216QP6W
Number of Poles	3
Order Multiple	10 piece
Product Main Type	QP
Product Name	Industrial Plug
Protection Type	Watertight
Rated Current (I <sub>n</sub> )	16 A
Rated Voltage (U <sub>r</sub> )	200 ... 250 V
Standards	IEC 60309-1, -2
Suitable for Product Class	IEC Industrial Plugs and Sockets
Instructions and Manuals	2CMC700014C0016
RAL Number	RAL 7012 - Basalt Grey

## Classifications

eClass	27440509
UNSPSC	39120000

---

## Categories

---

Low Voltage Products and Systems → Industrial Plugs and Sockets → Fast & Safe

