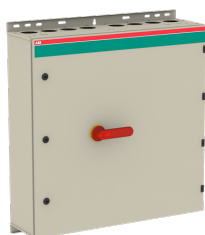


PRODUCT-DETAILS

# OT400DLRR6AZ

## OT400DLRR6AZ Safety switch



### General Information

Extended Product Type	OT400DLRR6AZ
Product ID	1SCA022512R9430
EAN	6417019166438
Catalog Description	OT400DLRR6AZ Safety switch

### Long Description

The enclosed switch is using a galvanised steel enclosure, with polyester coating. It is suitable for outdoor use with respect to UV light and ingress protection. The enclosure have inbuilt gas pressure relief function to protect the user in case of an internal arc. The door is earthed via the hinges. The enclosure is prepared for single and parallell cables. Cable entry types can be blank , ring-flange or C-flange type (FL21), with different cable configuration, like top/bottom or bottom/bottom. The handle is padlockable for 3 padlocks, cover is interlocked, and interlock function can be bypassed for thermographing.

### Ordering

Minimum Order Quantity	1 piece
Customs Tariff Number	85363090
Country of Origin	Finland (FI)

### Popular Downloads

Data Sheet, Technical Information	1SCC340015C0201
-----------------------------------	-----------------

Instructions and Manuals	1SCC340005M0007
Mechanical Drawings	OTKM808023P8R.stp

## Dimensions

Product Net Width	800 mm
Product Net Height	800 mm
Product Net Depth / Length	230 mm
Product Net Weight	35.74 kg

## Technical

Rated Operational Current AC-22A ( $I_e$ )	(380 ... 415 V) 400 A (500 V) 400 A (690 V) 400 A
Rated Operational Current AC-23A ( $I_e$ )	(380 ... 415 V) 400 A (500 V) 400 A (690 V) 400 A
Rated Operational Power AC-23A ( $P_e$ )	(380 ... 415 V) 220 kW (500 V) 280 kW (690 V) 355 kW
Conventional Thermal Current ( $I_{the}$ )	Fully Enclosed 400 A
Rated Insulation Voltage ( $U_i$ )	acc. to IEC/EN 60664-1 1000 V
Rated Operational Voltage	Main Circuit 1000 V
Rated Short-Circuit Making Capacity ( $I_{cm}$ )	(1000 V AC) 65 kA
Rated Short-time Withstand Current ( $I_{cw}$ )	for 1 s 15 kA
Power Loss	at Rated Operating Conditions per Pole 10 W
Pollution Degree	3
Handle Color	Red / Yellow
Handle Type	Pistol handle
Standards	IEC 60947-1, -3
Number of Poles	6
Connecting Capacity Main Circuit	Hole Diameter 10 mm Screw Clamp / PE Terminal 8pcs, 25...120 mm <sup>2</sup>
Cable Entry Position	Up/Down
Cable Outlets Per Side	8xring-flange / 8xring-flange, Knock-outs: 3x10mm, 12.5mm, 20.5mm, 25.5mm, 32.5mm
Degree of Protection	acc. to IEC 60529 IP65
Enclosure Material	Steel sheet
Maximum Mounted Auxiliary Contacts	4 NO, 2 NC
Mounted Auxiliary Contacts	4 NO, 2 NC

## Environmental

RoHS Status

Following EU Directive 2011/65/EU

---

## Certificates and Declarations (Document Number)

---

Declaration of Conformity - CE	1SCC340025D2704
Instructions and Manuals	1SCC340005M0007
RoHS Information	1SCC340049D0202

---



---

## Container Information

---

Package Level 1 Units	box 1 piece
Package Level 1 Width	815 mm
Package Level 1 Depth / Length	910 mm
Package Level 1 Height	325 mm
Package Level 1 Gross Weight	39.6 kg
Package Level 1 EAN	6417019166438

---



---

## Classifications

---

Object Classification Code	Q
ETIM 5	EC000216 - Switch disconnecter
ETIM 6	EC000216 - Switch disconnecter
ETIM 7	EC000216 - Switch disconnecter
WEEE Category	4. Large Equipment (Any External Dimension More Than 50 cm)

---



---

## Categories

---

Low Voltage Products and Systems → Enclosed Switches → Enclosed Safety Switches → Enclosed Safety Switches

