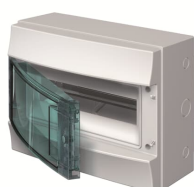


PRODUCT-DETAILS

65P12X12A

MISTRAL65 transparent door 12M 22SM



General Information

Extended Product Type	65P12X12A
Product ID	1SLM006501A1202
ABB Type Designation	Mistral65
EAN	8000126107708
Catalog Description	MISTRAL65 transparent door 12M 22SM
Long Description	MISTRAL65 transparent door 12M 22SM

Ordering

EAN	8000126107708
Minimum Order Quantity	1 piece
Customs Tariff Number	85371098

Dimensions

Product Net Width	320 mm
Product Net Height	250 mm
Product Net Depth / Length	155 mm
Product Net Weight	1.46 kg

Container Information

Package Level 1 Units	box 7 piece
Package Level 1 Width	400 mm
Package Level 1 Height	525 mm
Package Level 1 Depth / Length	600 mm
Package Level 1 Gross Weight	11.4 kg
Package Level 1 EAN	8000126107715

Additional Information

Color	grey
Cover Plate Type	Door
Degree of Protection	IP65
DIN Place Units	12
Enclosure Material	thermoplastic
Glow Wire Test	650
Housing Material	Plastic
Interior Depth	98 mm
Mounting Type	Wall-mounting
Number of Rows	1
Number of Line Terminals	0
Order Multiple	7 piece
Power Loss	27 W
Product Main Type	MISTRAL65
Product Name	Consumer Unit (with terminal bars)
Protection Class	Isolated

Certificates and Declarations (Document Number)

Data Sheet, Technical Information	1SLC801013D0201
Declaration of Conformity - CE	1SLT100093D0200
Environmental Information	1SLC801013D0201
Instructions and Manuals	1IM5177
RoHS Information	1SLT00003R2E0

Classifications

ETIM 4	EC000214 - Small distribution board
ETIM 5	EC000214 - Small distribution board
ETIM 6	EC000214 - Small distribution board
ETIM 7	EC000214 - Small distribution board
Object Classification Code	U
WEEE Category	5. Small Equipment (No External Dimension More Than 50 cm)

Categories

Low Voltage Products and Systems → Enclosures → Consumer Units → Consumer Units

