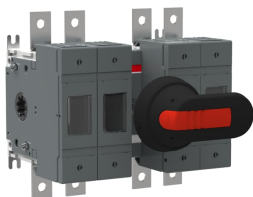


PRODUCT-DETAILS

# OS160GB22N1P

## OS160GB22N1P SWITCH FUSE



### General Information

|                       |   |
|-----------------------|---|
| Extended Product Type | OS160GB22N1P  |
| Product ID            | 1SCA115899R1001   |
| EAN                   | 6417019481685   |
| Catalog Description   | OS160GB22N1P SWITCH FUSE  |
| Long Description      | Switch Fuses,Front Operated,4-pole,22 (Between the Poles),British Standard,A2-A4,Handle and shaft included,Switched - With Solid Link |

### Ordering

|                       |              |
|-----------------------|--------------|
| Customs Tariff Number | 85365080     |
| Country of Origin     | Finland (FI) |

### Popular Downloads

|                                   |                 |
|-----------------------------------|-----------------|
| Data Sheet, Technical Information | 1SCC311137D0201 |
| Instructions and Manuals          | 1SCC110037M0206 |

### Dimensions

|                    |        |
|--------------------|--------|
| Product Net Width  | 182 mm |
| Product Net Height | 140 mm |

|                            |                    |
|----------------------------|--------------------|
| Product Net Depth / Length | 115 mm             |
| Product Net Weight         | 2.61 kg<br>5.75 lb |

## Technical

|  |  |
|--|--|
| Rated Operational Current AC-21A ( $I_e$ )           | (500 V) 160 A<br>(690 V) 160 A   |
| Rated Operational Current AC-22A ( $I_e$ )           | (500 V) 160 A<br>(690 V) 160 A   |
| Rated Operational Current AC-23A ( $I_e$ )           | (500 V) 160 A<br>(690 V) 160 A   |
| Rated Operational Power AC-23A ( $P_e$ )             | (220 ... 240 V) 45 kW<br>(400 V) 75 kW<br>(415 V) 75 kW<br>(500 V) 90 kW<br>(690 V) 132 kW |
| Conventional Free-air Thermal Current ( $I_{th}$ )   | q = 40 °C 160 A  |
| Conventional Thermal Current ( $I_{the}$ )           | Fully Enclosed 160 A   |
| Rated Impulse Withstand Voltage ( $U_{imp}$ )        | 8 kV   |
| Rated Insulation Voltage ( $U_i$ )                   | 1000 V   |
| Rated Operational Voltage                            | 500 V  |
| Rated Short-time Withstand Current ( $I_{cw}$ )      | for 1 s 5 kiloampere rms   |
| Rated Conditional Short-Circuit Current ( $I_{nc}$ ) | (690 V) 80 kA  |
| Power Loss   | at Rated Operating Conditions per Pole 12 W  |
| Pollution Degree                                     | 3  |
| Handle Type  | Pistol handle and shaft included   |
| Fourth Pole Position                                 | Left Side  |
| Fourth Pole Type                                     | Switched - With Solid Link   |
| Switches Operating Mechanism                         | 22 (Between the Poles)   |
| Position of Line Terminals                           | Top In - Bottom Out, Bottom In - Top Out   |
| Fuse Size  | A2-A4  |
| Fuse System  | British Standard   |
| Operating Mode                                       | Front Operated   |
| Standards  | IEC 60947-3  |
| Mounting Type  | Base mounting  |
| Number of Poles                                      | 4  |
| Terminal Type  | Lug terminals  |
| Terminal Width                                       | 20 mm  |
| Tightening Torque                                    | 15 ... 22 N·m  |
| Fuse Type  | BS   |

## Environmental

|             |  |
|-------------|--|
| RoHS Status | Following EU Directive 2011/65/EU and Amendment 2015/863 July 22, 2019 |
|-------------|--|

## Certificates and Declarations (Document Number)

CCC Certificate

CCC OS100-160G\_2015.pdf

|                                |   |
|--------------------------------|---|
| Declaration of Conformity - CE | 1SCC311137D2703   |
| DNV GL Certificate             | 1SCC311125D0203   |
| EAC Certificate                | EAC<br>OT_OTDC_OTL_OTP_OTR_OTU_OTE_OETL_OESA_OESC_OTM_OS_OSM_.pdf |
| Instructions and Manuals       | 1SCC110037M0206   |
| RoHS Information               | 1SCC311137D2703   |

## Container Information

|                                |                   |
|--------------------------------|-------------------|
| Package Level 1 Units          | box 1 piece       |
| Package Level 1 Width          | 260 mm<br>10.2 in |
| Package Level 1 Depth / Length | 290 mm<br>11.4 in |
| Package Level 1 Height         | 190 mm<br>7.5 in  |
| Package Level 1 Gross Weight   | 2.9 kg<br>6.4 lb  |
| Package Level 1 EAN            | 6417019481685     |

## Classifications

|                            |  |
|----------------------------|--|
| Object Classification Code | Q  |
| ETIM 4                     | EC001040 - Fuse switch disconnecter                        |
| ETIM 5                     | EC001040 - Fuse switch disconnecter                        |
| ETIM 6                     | EC001040 - Fuse switch disconnecter                        |
| ETIM 7                     | EC001040 - Fuse switch disconnecter                        |
| WEEE Category              | 5. Small Equipment (No External Dimension More Than 50 cm) |

## Categories

Low Voltage Products and Systems → Switches → Switch Fuses

