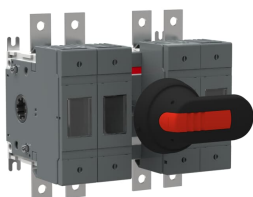


PRODUCT-DETAILS

# OS160GB22N1P

## OS160GB22N1P SWITCH FUSE



### General Information

Extended Product Type	OS160GB22N1P
Product ID	1SCA115899R1001
EAN	6417019481685
Catalog Description	OS160GB22N1P SWITCH FUSE
Long Description	Switch Fuses,Front Operated,4-pole,22 (Between the Poles),British Standard,A2-A4,Handle and shaft included,Switched - With Solid Link

### Ordering

Customs Tariff Number	85365080
Country of Origin	Finland (FI)

### Popular Downloads

Data Sheet, Technical Information	1SCC311137D0201
Instructions and Manuals	1SCC110037M0206

### Dimensions

Product Net Width	182 mm
Product Net Height	140 mm

Product Net Depth / Length	115 mm
Product Net Weight	2.61 kg 5.75 lb

## Technical

Rated Operational Current AC-21A ( $I_e$ )	(500 V) 160 A (690 V) 160 A
Rated Operational Current AC-22A ( $I_e$ )	(500 V) 160 A (690 V) 160 A
Rated Operational Current AC-23A ( $I_e$ )	(500 V) 160 A (690 V) 160 A
Rated Operational Power AC-23A ( $P_e$ )	(220 ... 240 V) 45 kW (400 V) 75 kW (415 V) 75 kW (500 V) 90 kW (690 V) 132 kW
Conventional Free-air Thermal Current ( $I_{th}$ )	q = 40 °C 160 A
Conventional Thermal Current ( $I_{the}$ )	Fully Enclosed 160 A
Rated Impulse Withstand Voltage ( $U_{imp}$ )	8 kV
Rated Insulation Voltage ( $U_i$ )	1000 V
Rated Operational Voltage	500 V
Rated Short-time Withstand Current ( $I_{cw}$ )	for 1 s 5 kiloampere rms
Rated Conditional Short-Circuit Current ( $I_{nc}$ )	(690 V) 80 kA
Power Loss	at Rated Operating Conditions per Pole 12 W
Pollution Degree	3
Handle Type	Pistol handle and shaft included
Fourth Pole Position	Left Side
Fourth Pole Type	Switched - With Solid Link
Switches Operating Mechanism	22 (Between the Poles)
Position of Line Terminals	Top In - Bottom Out, Bottom In - Top Out
Fuse Size	A2-A4
Fuse System	British Standard
Operating Mode	Front Operated
Standards	IEC 60947-3
Mounting Type	Base mounting
Number of Poles	4
Terminal Type	Lug terminals
Terminal Width	20 mm
Tightening Torque	15 ... 22 N·m
Fuse Type	BS

## Environmental

RoHS Status	Following EU Directive 2011/65/EU and Amendment 2015/863 July 22, 2019
-------------	--

## Certificates and Declarations (Document Number)

CCC Certificate

CCC OS100-160G\_2015.pdf

Declaration of Conformity - CE	1SCC311137D2703
DNV GL Certificate	1SCC311125D0203
EAC Certificate	EAC OT_OTDC_OTL_OTP_OTR_OTU_OTE_OETL_OESA_OESC_OTM_OS_OSM_.pdf
Instructions and Manuals	1SCC110037M0206
RoHS Information	1SCC311137D2703

## Container Information

Package Level 1 Units	box 1 piece
Package Level 1 Width	260 mm 10.2 in
Package Level 1 Depth / Length	290 mm 11.4 in
Package Level 1 Height	190 mm 7.5 in
Package Level 1 Gross Weight	2.9 kg 6.4 lb
Package Level 1 EAN	6417019481685

## Classifications

Object Classification Code	Q
ETIM 4	EC001040 - Fuse switch disconnecter
ETIM 5	EC001040 - Fuse switch disconnecter
ETIM 6	EC001040 - Fuse switch disconnecter
ETIM 7	EC001040 - Fuse switch disconnecter
WEEE Category	5. Small Equipment (No External Dimension More Than 50 cm)

## Categories

Low Voltage Products and Systems → Switches → Switch Fuses

