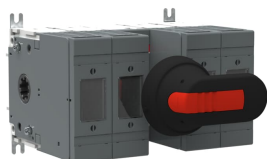


PRODUCT-DETAILS

OS160GD22BBN2P

OS160GD22BBN2P SPECIAL CONNECTED SWITCH FUSE



General Information

Extended Product Type	OS160GD22BBN2P
Product ID	1SCA120759R1001
EAN	6417019522135
Catalog Description	OS160GD22BBN2P SPECIAL CONNECTED SWITCH FUSE
Long Description	Switch Fuses,Front Operated,4-pole,22 (Between the Poles),DIN,000,00,Handle and shaft included,Switched - With Solid Link

Ordering

Customs Tariff Number	85365080
Country of Origin	Finland (FI)

Popular Downloads

Data Sheet, Technical Information	1SCC311140D0201
Instructions and Manuals	1SCC110037M0206

Dimensions

Product Net Width	254 mm
Product Net Height	144 mm

Product Net Depth / Length	167 mm
Product Net Weight	2.12 kg

Technical

Rated Operational Current AC-21A (I_e)	(500 V) 160 A (690 V) 160 A
Rated Operational Current AC-22A (I_e)	(500 V) 160 A (690 V) 160 A
Rated Operational Current AC-23A (I_e)	(500 V) 160 A (690 V) 160 A
Rated Operational Power AC-23A (P_e)	(220 ... 240 V) 45 kW (400 V) 75 kW (415 V) 75 kW (500 V) 90 kW (690 V) 132 kW
Conventional Free-air Thermal Current (I_{th})	q = 40 °C 160 A
Conventional Thermal Current (I_{the})	Fully Enclosed 160 A
Rated Impulse Withstand Voltage (U_{imp})	8 kV
Rated Insulation Voltage (U_i)	1000 V
Rated Operational Voltage	500 V
Rated Short-time Withstand Current (I_{cw})	for 1 s 5 kiloampere rms
Rated Conditional Short-Circuit Current (I_{nc})	(690 V) 80 kA
Power Loss	at Rated Operating Conditions per Pole 12 W
Pollution Degree	3
Handle Type	Pistol handle and shaft included
Fourth Pole Position	Right Side
Fourth Pole Type	Switched - With Solid Link
Switches Operating Mechanism	22 (Between the Poles)
Position of Line Terminals	Back In - Back Out
Fuse Size	000,00
Fuse System	DIN
Operating Mode	Front Operated
Standards	IEC 60947-3
Mounting Type	Base mounting
Number of Poles	4
Terminal Type	Lug terminals
Terminal Width	20 mm
Tightening Torque	15 ... 22 N·m
Fuse Type	DIN

Environmental

RoHS Status	Following EU Directive 2011/65/EU and Amendment 2015/863 July 22, 2019
-------------	--

Certificates and Declarations (Document Number)

Declaration of Conformity - CE	1SCC311140D2703
--------------------------------	-----------------

DNV GL Certificate	1SCC311125D0203
EAC Certificate	EAC OT_OTDC_OTL_OTP_OTR_OTU_OTE_OETL_OESA_OESC_OTM_OS_OSM_p f
Instructions and Manuals	1SCC110037M0206
RoHS Information	1SCC311140D2703

Container Information

Package Level 1 Units	box 1 piece
Package Level 1 Width	160 mm
Package Level 1 Depth / Length	245 mm
Package Level 1 Height	185 mm
Package Level 1 Gross Weight	2.7 kg
Package Level 1 EAN	6417019522135

Classifications

Object Classification Code	Q
ETIM 4	EC001040 - Fuse switch disconnecter
ETIM 5	EC001040 - Fuse switch disconnecter
ETIM 6	EC001040 - Fuse switch disconnecter
ETIM 7	EC001040 - Fuse switch disconnecter
WEEE Category	5. Small Equipment (No External Dimension More Than 50 cm)

Categories

Low Voltage Products and Systems → Switches → Switch Fuses

