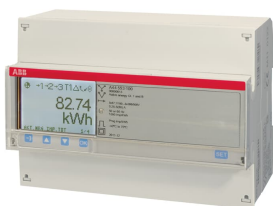


PRODUCT-DETAILS

A44 553-100

Active Energy Class $\pm 0,5\%$ (or C for MID meters). Reactive Energy Class $\pm 2\%$;



General Information

Extended Product Type	A44 553-100
Product ID	2CMA170546R1000
ABB Type Designation	A44 553-100
EAN	7392696705462
Catalog Description	Active Energy Class $\pm 0,5\%$ (or C for MID meters). Reactive Energy Class $\pm 2\%$;

Long Description

Advanced DIN-rail meter with a large and easy to read back lighted pixel-oriented display. The meter is intended for use in the industry, commercial buildings etc. The meter can be used in 3 or 4 wire systems with a wide voltage range. The meter has several instrumentation values, 25 possible alarms and event logs. Three phase transformer connected for active and reactive energy. Import and export of energy in different registers and one total. Resettable register for intermediate values. Internal clock for tariff shift, Min and maximum demand, previous values and event log with timestamps. 8 channel load profile Four programmable inputs or outputs. Up to the 16th harmonics for pulses or alarm etc. M-Bus communication. Accuracy class 0,5 (or C for MID meters). The meters is IEC approved + MID approved and verified.

Ordering

E-Number (Finland)	6701029
E-Number (Sweden)	0980729
EAN	7392696705462
Minimum Order Quantity	1 piece
Customs Tariff Number	90283019

Dimensions

Product Net Width	123 mm
Product Net Height	26.5 mm
Product Net Depth / Length	65 mm
Product Net Weight	0.363 kg

Container Information

Package Level 1 Units	box 1 piece
Package Level 1 Width	98 mm
Package Level 1 Height	68 mm
Package Level 1 Depth / Length	144 mm
Package Level 1 Gross Weight	0.453 kg
Package Level 1 EAN	7392696705462

Environmental

Ambient Air Temperature	Operation -40 ... +70 °C
RoHS Status	Following EU Directive 2002/95/EC August 18, 2005 and amendment

Additional Information

Accuracy	Active Energy Class $\pm 0,5\%$ (or C for MID meters). Reactive Energy Class $\pm 2\%$.
Communication Interface	RS-485
Communication	M-Bus TP
Connecting Capacity Main Circuit	0.5 ... 10 mm ²
Current Rating	6 A
Degree of Protection	IP20
Enclosure Material	Plastic
Frequency (f)	50 ... 60 Hz
Function	Electricity meter
Meter Type	Transformer connected
Mounting Type	DIN rail
Number of Phases	3
	0.801 W
Product Main Type	A44
Product Name	A44 553-100
Rated Current (I_n)	6 A
Rated Voltage (U_r)	(Un) L-L 100 ... 500 V (Un) N-L 57.7 ... 288 V
RoHS Date	2011-44
Standards	IEC 62053-22
Sub-Function	Platinum

Certificates and Declarations (Document Number)

Data Sheet, Technical Information	2CMC484001M0201
Declaration of Conformity	2CMC484002D0001

- CE

Environmental Information	2CMC484005D0001
Instructions and Manuals	2CMC484003M0201
RoHS Information	2CMC484006

Classifications

ETIM 4	EC001506 - Electronic kilowatt-hour meter
ETIM 5	EC001506 - Kilowatt-hour meter
ETIM 6	EC001506 - Kilowatt-hour meter
ETIM 7	EC001506 - Kilowatt-hour meter
Object Classification Code	P
WEEE Category	5. Small Equipment (No External Dimension More Than 50 cm)

Categories

Low Voltage Products and Systems → Modular DIN Rail Products → Energy Efficiency Devices → Energy Meters

