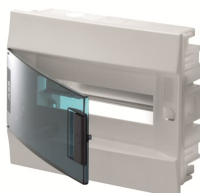


PRODUCT-DETAILS

# 41A12X12A

## MISTRAL41F flush transp. door 12M 12SM



### General Information

Extended Product Type	41A12X12A
Product ID	1SLM004101A1203
ABB Type Designation	Mistral41F
EAN	8000126142013
Catalog Description	MISTRAL41F flush transp. door 12M 12SM
Long Description	MISTRAL41F flush transparent door 12M 12SM

### Ordering

EAN	8000126142013
Minimum Order Quantity	1 piece
Customs Tariff Number	85371098

### Dimensions

Product Net Width	265.000 mm
Product Net Height	122.000 mm
Product Net Depth / Length	330.000 mm
Product Net Weight	1.200 kg

### Container Information

Package Level 1 Units	box 9 piece
Package Level 1 Width	400.000 mm
Package Level 1 Height	530.000 mm
Package Level 1 Depth / Length	600.000 mm
Package Level 1 Gross Weight	11.850 kg
Package Level 1 EAN	8000126142020

## Additional Information

Color	white
Cover Plate Type	Door
Degree of Protection	IP41
DIN Place Units	12
Enclosure Material	thermoplastic
Glow Wire Test	650
Housing Material	Plastic
Interior Depth	73 mm
Mounting Type	Flush-mounting
Number of Rows	1
Number of Line Terminals	0
Order Multiple	9 piece
Power Loss	22 W
Product Main Type	MISTRAL41F
Product Name	Consumer Unit (with terminal bars)
Protection Class	Isolated

## Certificates and Declarations (Document Number)

Declaration of Conformity - CE	9AKK107046A4897
Instructions and Manuals	9AKK107046A4893
RoHS Information	9AKK107046A4897

## Classifications

ETIM 4	EC000214 - Small distribution board
ETIM 5	EC000214 - Small distribution board
ETIM 6	EC000214 - Small distribution board
ETIM 7	EC000214 - Small distribution board
Object Classification Code	U
WEEE Category	5. Small Equipment (No External Dimension More Than 50 cm)

## Categories

Low Voltage Products and Systems → Enclosures → Consumer Units → Consumer Units

