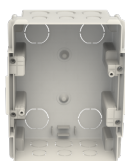


PRODUCT-DETAILS

41S04X11

Flush-mounting box 650 MISTRAL41F 4M



General Information

Extended Product Type	41S04X11
Product ID	1SLM004100A1700
ABB Type Designation	Mistral41F
EAN	8000126114072
Catalog Description	Flush-mounting box 650 MISTRAL41F 4M
Long Description	Flush-mounting box 650 MISTRAL41F 4M

Ordering

EAN	8000126114072
Minimum Order Quantity	1 piece
Customs Tariff Number	85371098

Dimensions

Product Net Width	129 mm
Product Net Height	182 mm
Product Net Depth / Length	80 mm
Product Net Weight	0.15 kg

Container Information

Package Level 1 Units	box 24 piece
Package Level 1 Width	330 mm
Package Level 1 Height	525 mm
Package Level 1 Depth / Length	445 mm
Package Level 1 Gross Weight	4.75 kg
Package Level 1 EAN	8000126114089

Additional Information

Color	white
Degree of Protection	IP41
DIN Place Units	4
Enclosure Material	thermoplastic
Glow Wire Test	650
Housing Material	Plastic
Mounting Type	Flush-mounting
Number of Rows	1
Number of Line Terminals	0
Order Multiple	24 piece
Power Loss	11 W
Product Main Type	MISTRAL41F - Box
Product Name	Consumer Unit (empty)
Protection Class	Isolated

Certificates and Declarations (Document Number)

Declaration of Conformity - CE	9AKK107492A4740
Instructions and Manuals	9AKK107046A4893
RoHS Information	9AKK107492A4740

Classifications

ETIM 4	EC000214 - Small distribution board
ETIM 5	EC000214 - Small distribution board
ETIM 6	EC000214 - Small distribution board
ETIM 7	EC000214 - Small distribution board
Object Classification Code	U
WEEE Category	Product Not in WEEE Scope

Categories

Low Voltage Products and Systems → Enclosures → Consumer Units → Consumer Units

