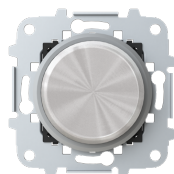


PRODUCT-DETAILS

8660 CR

8660 CR - Universal rotatory/push dimmer - Chrome



General Information

Extended Product Type	8660 CR
Product ID	2CLA866000A1401
EAN	8427238121697
Catalog Description	8660 CR - Universal rotatory/push dimmer - Chrome
Long Description	<p>Rated voltage: 230 Vac / 50 Hz Min. power: 60 W/VA Max. power: - Incandescent: 500 W - Halogen lamp with electronic transformer: 500 VA - Halogen lamp with ferromagnetic transformer: 400 VA 2 wire connection Optional: auxiliary control with 8104.X push-buttons Indicator LED lamp included Operating temperature: 0 - 30°C Without fixing claws Included: metallic rotatory knob Ring color: Chrome</p>

Ordering

EAN	8427238121697
Minimum Order Quantity	1 piece
Customs Tariff Number	85389099

Dimensions

Product Net Width	0.075 m
Product Net Height	0.064 m
Product Net Depth / Length	0.075 m
Product Net Weight	0.134 kg

Container Information

Package Level 1 Units	box 1 piece
Package Level 1 Width	0.075 m
Package Level 1 Height	0.064 m
Package Level 1 Depth / Length	0.075 m
Package Level 1 Gross Weight	0.134 kg
Package Level 1 EAN	8427238121697

Environmental

Ambient Air Temperature	Operation -5 ... +35 °C Storage -5 ... +50 °C
-------------------------	--------------------------------------------------

Additional Information

Actuator Type	Turn button
Color	Chrome
Connection Type	Screw
Degree of Protection	IP20
Frequency (f)	50...50 Hz
Load Type	Universal
Material	Metal
Mounting Type	Flush mounted (plaster)
Product Main Type	Sky Niessen
Product Name	Universal rotatory/push dimmer - Chrome
Rated Voltage (U _r)	230...230 V
Replaced Product ID (OLD)	2CL0866004
Surface Finishing	Glossy

Certificates and Declarations (Document Number)

Data Sheet, Technical Information	9AKK107046A0356
Declaration of Conformity - CE	9AKK106713A1747
Instructions and Manuals	2CLX860009A1001

Classifications

ETIM 5	EC000025 - Dimmer
ETIM 6	EC000025 - Dimmer
ETIM 7	EC000025 - Dimmer
UNSPSC	39122206
WEEE Category	5. Small Equipment (No External Dimension More Than 50 cm)

Categories

Low Voltage Products and Systems → Switch Assortments → Flush Mounted VDE Range - Niessen → Design Sky → CoverPlates (partly incl. Insert) Skymoon → Rotary Dimmer

Low Voltage Products and Systems → Switch Assortments → Light / LoadControl → Electronic Rotary / Push Button Dimmer (all Loads incl. LED, DALI) → Rotary Dimmer - Flush Mounted → Rotary Dimmer

