

Figure similar

MLFB-Ordering data 1FG1504-1QE23-2HF1-Z
D11+G23+K07

Client order no. :

Order no. :

Offer no. :

Remarks :

Item no. :

Consignment no. :

Project :

Gearbox data

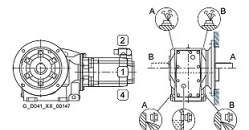
Gear box type	K39	Radial force maximum	2890 N
Gearbox basic type	Bevel geared	Max. permissible radial force with Mmax	2760 N
Gearbox size	39	Moment of inertia	0.55 kgcm ²
Transmission stages	3	Torsional stiffness	17 Nm/°
Transmission (ratio)	10.04	Efficiency	0.95
Gear number relation	231/23	Mounting position	M1-A
Output moment maximum (short-time)	196 Nm	Mounting type	Housing flange (C type)
max. input speed (briefly)	4500 rpm	Output shaft version	Solid shaft standard
Output speed short-time	448 rpm	Output shaft dimension	V25x50 mm
Emergency off output moment (1000 cycles)	310 Nm	Gearbox flange diameter	-/-
		Output shaft bearing	No
		Figure 2 torque support	-

General tech. specifications

Degree of protection	IP65
Color of the housing	Standard painting (Anthracite RAL 7016)
Specification	CE / UL / CSA / EAC / cRUus
Net weight	21.43 kg
1m-sound pressure level L _{pA} (ToI.+3dB(A))	70
Plug position	top (default) (2)
Adapter flange position	top (default) (2)

Lubrication and sealing

Gear oil	Polyglycol oil CLP ISO PG VG220
Output shaft sealing	Seal longer service life
Oil charge	0.40 l



MLFB-Ordering data 1FG1504-1QE23-2HF1-Z
D11+G23+K07



Figure similar

Motor data		Limiting data	
Motor type	Permanent-magnet synchronous motor	Maximum speed (short-time)	7200 rpm
Motor type	Compact	Maximum torque	26.00 Nm
DC-link voltage, max.	510...720V	Motor current short term	19.2 A
Shaft height	63 mm	Optimum operating point	
Cooling	Natural cooling	Optimum speed	3000 rpm
Rated speed	3000 rpm	Optimum power	1.69 kW
Rated torque (100K)	5.40 Nm	Recommended Motor Module	
Rated power	1.70 kW	Rated inverter current	5.0 A
Rated current (100K)	3.70 A	Maximum inverter current	15.0 A
Static torque	7.50 Nm	Maximum torque	22.1 Nm
Static current	4.85 A		
Moment of inertia	11.20 kgcm ²		
Efficiency η	91 %		
Temperature monitoring	Pt1000 temperature sensor		
Connector size	1		
Encoder system	Encoder AS20DQI: absolute encoder single-turn 20 bits		

Info servo geared motor

Outside the standard temperature range of -10 to +40 °C, further selectable options must be observed, in addition to the lubricant selection.

Further, you have to check the suitability of the components and options used for the requested temperature range.

MLFB-Ordering data 1FG1504-1QE23-2HF1-Z
D11+G23+K07

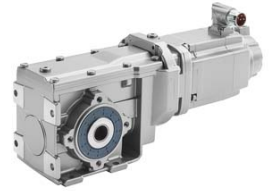


Figure similar

Options

D11	M1-A for bevel and worm gearboxes
G23	Seal longer service life
K07	Polyglycol oil CLP ISO PG VG220

Standards

Compliance with standards CE / UL / CSA / EAC / cRUus

CE marking EN 60034