

withdraw. non-aut. circuit-b. with guide frame 3-pole, size III, IEC In=6300A to 690V, AC50/60Hz Icu=100kA at 500V rear connection vertical without overcurrent release Motorized/manual operating mechanism with spring charging motor AC 50/60 Hz 110-127 V AC or 110-125 V DC Activation 50/60 Hz 110 V AC, 110 V DC With 1st auxiliary release Shunt release "F", F1 50/60 Hz 110 V AC/110 V DC, 100% on-load factor With 2nd auxiliary release "RC", F4 Undervoltage, Delay 0.2-3.2s 110-127 V AC, 110-125 V DC, 100% ED 4NO+4NC

Model	
product brand name	SENTRON
product designation	ACB
design of the product	IEC 60947-2
design of the actuating element	Pushbutton
type of the driving mechanism	Manual/motorized operating mechanism with mechanical and electrical closing
type of the driving mechanism / motor drive	Yes
design of the overcurrent release	without
General technical data	
number of poles	3
size of the circuit-breaker	3
utilization category	B
circuit-breaker / Design	3WL1
Voltage	
Rated insulation voltage $U_i$	1 000 V
insulation voltage / rated value	1 000 V
operating voltage	
• at AC / at 50/60 Hz / rated value	690 V
Protection class	
protection class IP	IP20
protection class IP / on the front	IP20
protection function of the overcurrent release	without
Dissipation	
power loss [W]	
• for rated value of the current / at AC / in hot operating state / per pole	533.3 W
• maximum	1 600 W
Current	
operational current	
• at 40 °C / rated value	6 300 A
• at 45 °C / rated value	6 300 A
• at 50 °C / rated value	5 920 A
• at 55 °C / rated value	5 920 A
• at 60 °C / rated value	5 810 A
• at 65 °C / rated value	5 810 A
• at 70 °C / rated value	5 500 A
continuous current / rated value / maximum	6 300 A
continuous current / rated value	6 300 A
Main circuit	
operating frequency	
• 1 / rated value	50 Hz
• 2 / rated value	60 Hz
Auxiliary circuit	
number of NC contacts / for auxiliary contacts	4

number of NO contacts / for auxiliary contacts	4
<b>Suitability</b>	
suitability for use	Contact unit without release
<b>Product details</b>	
product component	
• trip indicator	No
• voltage trigger	Yes
• undervoltage release	Yes
design of the auxiliary switch	4 NO + 4 NC
product extension / optional / motor drive	No
<b>Product function</b>	
product function	
• grounding protection	No
<b>Display and operation</b>	
display version	without display
<b>Short circuit</b>	
breaking capacity operating short-circuit current (Ics)	
• at 415 V / rated value	100 kA
• at 500 V / rated value	100 kA
• at 690 V / rated value	85 kA
breaking capacity maximum short-circuit current (Icu)	
• at 415 V / rated value	100 kA
• at 500 V / rated value	100 kA
• at 690 V / rated value	85 kA
<b>Connections</b>	
arrangement of electrical connectors / for main current circuit	Main terminal on the rear vertical
type of electrical connection / for main current circuit	busbar connection
<b>Mechanical Design</b>	
height	466.5 mm
width	704 mm
depth	485.5 mm
fastening method	drawer unit
<b>Environmental conditions</b>	
ambient temperature / during operation	
• minimum	-25 °C
• maximum	70 °C
ambient temperature / during storage	
• minimum	-40 °C
• maximum	70 °C

<b>General Product Approval</b>	<b>EMC</b>	<b>Declaration of Conformity</b>	<b>Test Certificates</b>
---------------------------------	------------	----------------------------------	--------------------------



[UK Declaration of Conformity](#)



[Special Test Certificate](#)

<b>Test Certificates</b>	<b>Marine / Shipping</b>
--------------------------	--------------------------

[Miscellaneous](#)

[Type Test Certificates/Test Report](#)



<b>Marine / Shipping</b>	<b>other</b>
--------------------------	--------------

Dangerous Good

Transport Information

Further information

Industry Mall (Online ordering system)

<https://mall.industry.siemens.com/mall/en/en/Catalog/product?mfb=3WL1363-4AA37-5FR4>

Service&Support (Manuals, Certificates, Characteristics, FAQs,...)

<https://support.industry.siemens.com/cs/ww/en/ps/3WL1363-4AA37-5FR4>

Image database (product images, 2D dimension drawings, 3D models, device circuit diagrams, ...)

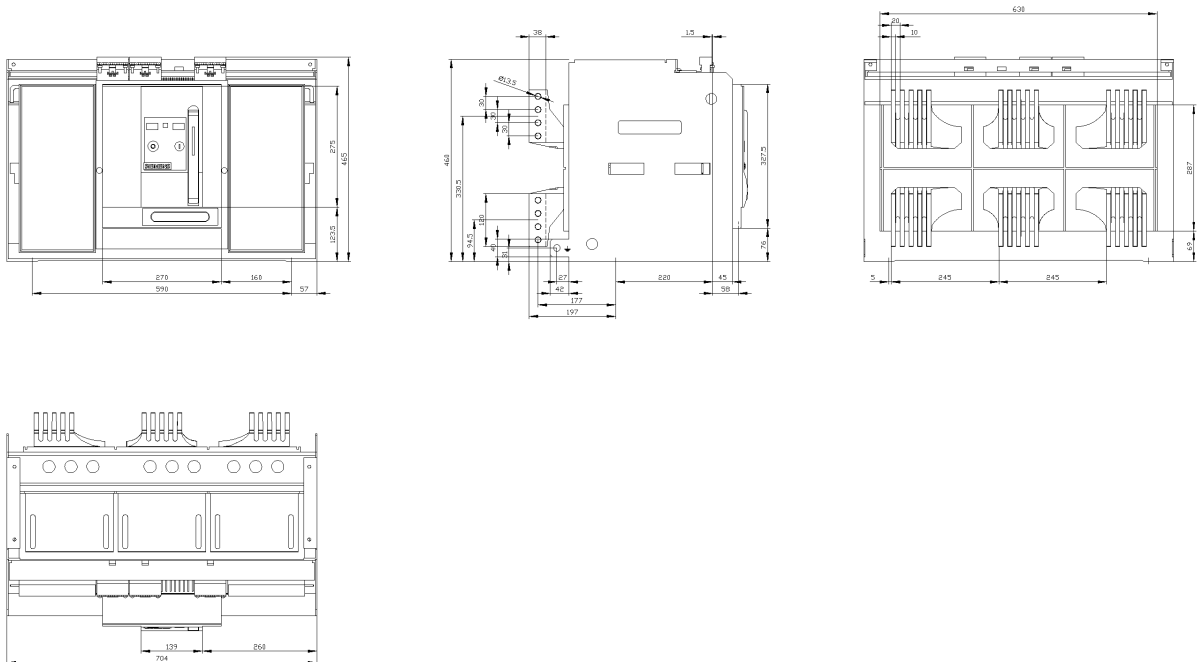
[http://www.automation.siemens.com/bilddb/cax\\_en.aspx?mfb=3WL1363-4AA37-5FR4](http://www.automation.siemens.com/bilddb/cax_en.aspx?mfb=3WL1363-4AA37-5FR4)

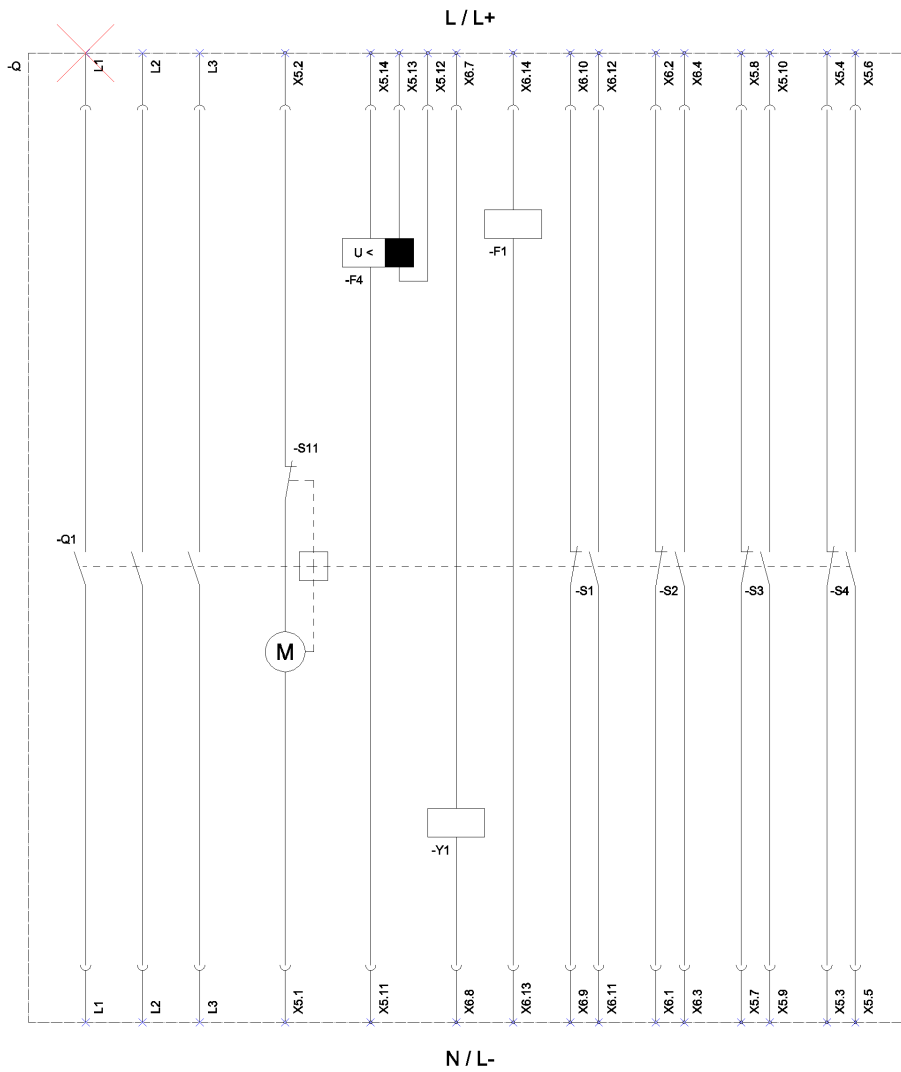
CAX-Online-Generator

<http://www.siemens.com/cax>

Tender specifications

<http://www.siemens.com/specifications>





S11 (Internal motor shutdown switch, if spring is tensioned / Interner Motorabstellschalter, wenn Feder gespannt); F1 (1st auxiliary release / Erster Hilfsauslöser); F4 (Undervoltage release time delayed / Unterspannungsauslöser verzögerbar); S1 - S8 (Auxiliary switch / Hilfsschalter); Y1 (Closing coil / Einschaltmagnet);

last modified:

11/30/2021

