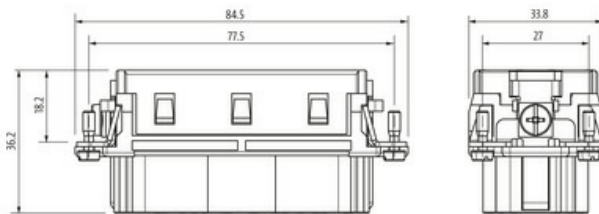
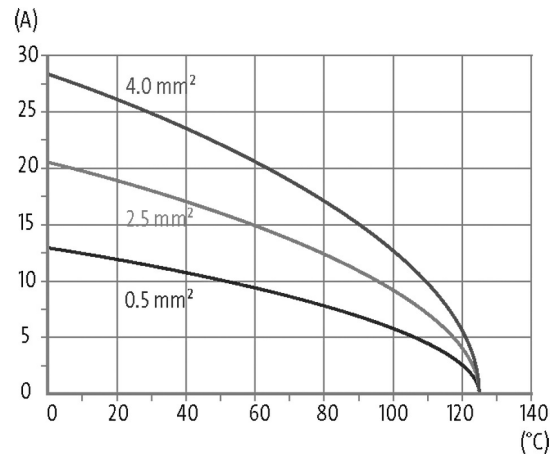
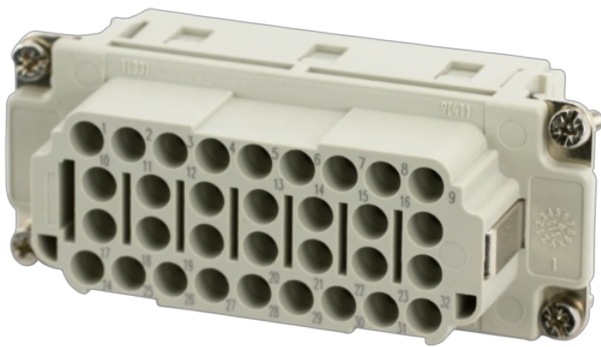


B16 female 32-pole, crimp t., 500 V, 16 A

B16
Female
32-pole
Crimp

Technical data will be only guaranteed with Murrelektronik components.

[Link to Product](#)**Illustration**

Product may differ from Image

**Technical Data**

Operating voltage	500 V AC/DC
Rated surge voltage	6.0 kV
Operating current	16 A
No. of poles	32 + PE
Material group	IIIa
Mating cycles	min. 500
Connection	Crimp
Connection cross section	0.14...4 mm ² (AWG 26...11)
Holding force	> 70 N
Insertion and withdrawal force	< 140 N
Isolation resistance	≥ 10 ⁸ Ω
Contact resistance	≤ 5 mΩ
Over voltage category	III

Wire-Ø incl. isolation max. 4.8 mm

General data

Material (contact)	Brass
Material (contact surface)	Ag
Pollution Degree	3
Temperature range	-40...+125 °C
Material (contact carrier)	PC GF
Flammability class	V-0 (acc. to UL 94)
Size	B16
Type	Female
Climatic category	40/125/21
Dimensions H×W×D	36.2×33.8×84.5 mm

Cables

Current load capacity see derating curve

Commercial data

country of origin	CZ
customs tariff number	85389099
EAN	4048879638708
eClass	27143424
Packaging unit	1.000