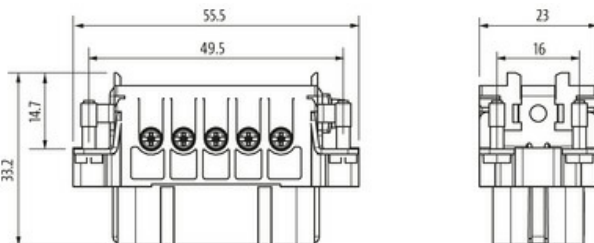
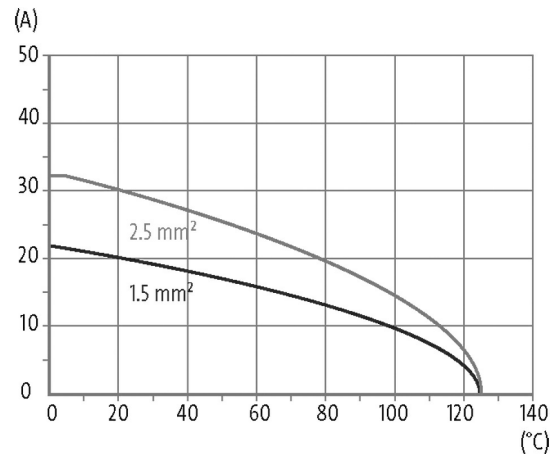
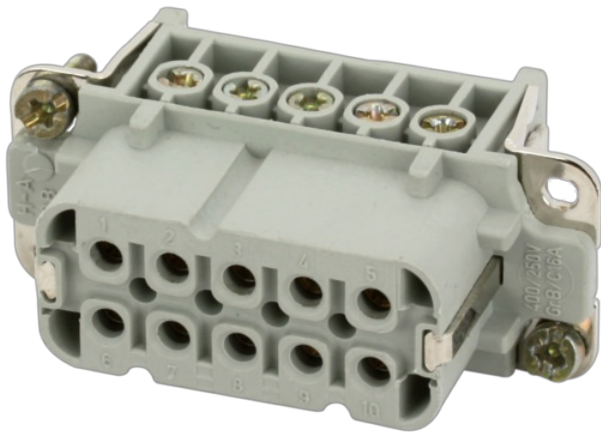


A10 female 10-pole, screw t., 250 V, 16 A

A10
 Female
 10-pole
 Screw terminal
 Technical data will be only guaranteed with Murrelektronik components.

[Link to Product](#)**Illustration**

Product may differ from Image

**Technical Data**

Operating voltage	250 V AC/DC
Rated surge voltage	4.0 kV
Operating current	16 A
No. of poles	10 + PE
Material group	IIIb
Mating cycles	min. 500
Connection	Screw terminal
Connection cross section	0.5...2.5 mm ² (AWG 20...14)
Pull-out force	min. 50 N
Holding force	> 150 N
Tightening torque (clamp screw)	min. 0.4 Nm
Insertion and withdrawal force	< 180 N
Stripping length	7.8 mm

The information in this brochure has been compiled with the utmost care.
 Liability for the correctness completeness and topicality of the information is restricted to gross negligence. Version: 03/22

Isolation resistance	$\geq 10^8 \Omega$
Contact resistance	$\leq 5 \text{ m}\Omega$
Over voltage category	III
Wire- \emptyset incl. isolation	max. 4.6 mm

General data

Material (contact)	Brass
Material (contact surface)	Ag
Pollution Degree	3
Temperature range	-40...+125 °C
Material (contact carrier)	PA GF
Flammability class	V-0 (acc. to UL 94)
Size	A10
Type	Female
Climatic category	40/125/21
Dimensions H×W×D	33.2×23×55.5 mm

Cables

Current load capacity	see derating curve
-----------------------	--------------------

Commercial data

country of origin	CZ
customs tariff number	85366990
EAN	4048879637800
eClass	27143424
Packaging unit	1.000