

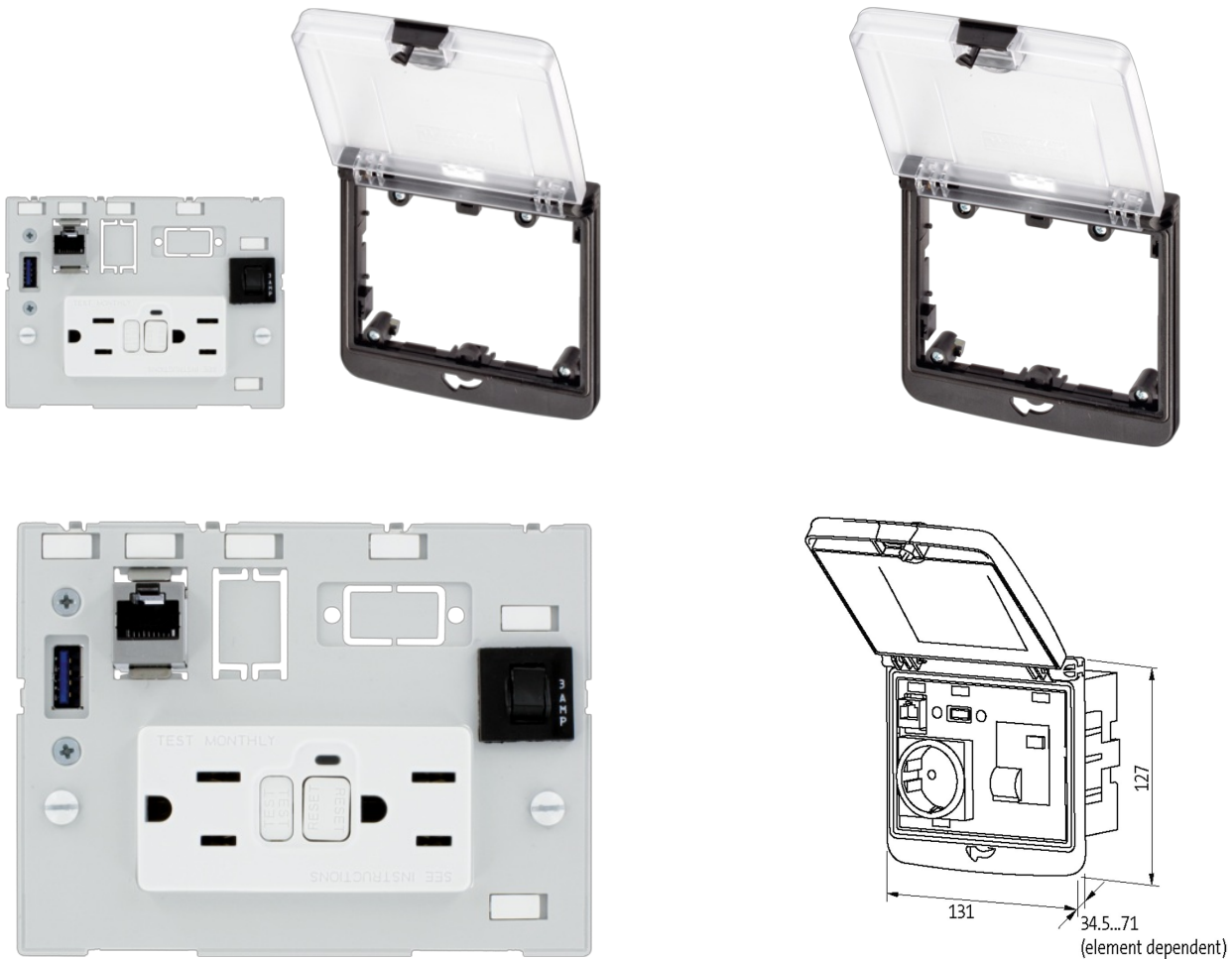
Modlink MSDD set contains:Frame 4000-68522-0000001

Insert 4000-68000-4100000

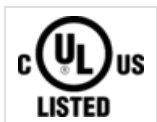
with touch protection

[Link to Product](#)

Illustration



Product may differ from Image



Frame

suitable for mounting with wall thickness	1...5 mm
Protection	IP65
Temperature range	-30...+70 °C (storage temperature -30...+80 °C)
Housing	Frame: plastic PA black, cap: plastic PC transparent

RJ45

Operating current (UL Rating)	max. 175 mA
Locking of ports	Snap In
Connection front side	RJ45

Connection rear side	RJ45
Operating voltage (UL Rating)	max. 30 V AC/42.4 V DC
Specification	CAT5e, Class D, 100 MHz, (EN 50173-1)
USB	
Operating current	1.5 A
Specification	USB: 3.0 (max. 5 Gbit/s)
Locking of ports	Snap In
Operating voltage	48 V AC/DC
Operating voltage (UL Rating)	max. 30 V AC/42.4 V DC
Fuse	
Operating voltage	250 V AC/32 V DC
Continuous load	3 A
USA	
Operating current	15 A
Operating voltage	125 V AC
No. of poles	2 + PE
Connection	Screw terminals: max. 2× 6 mm ² (AWG 10)
Commercial data	
country of origin	CN
customs tariff number	85366990
EAN	4048879673525
eClass	27189234
Packaging unit	1.000