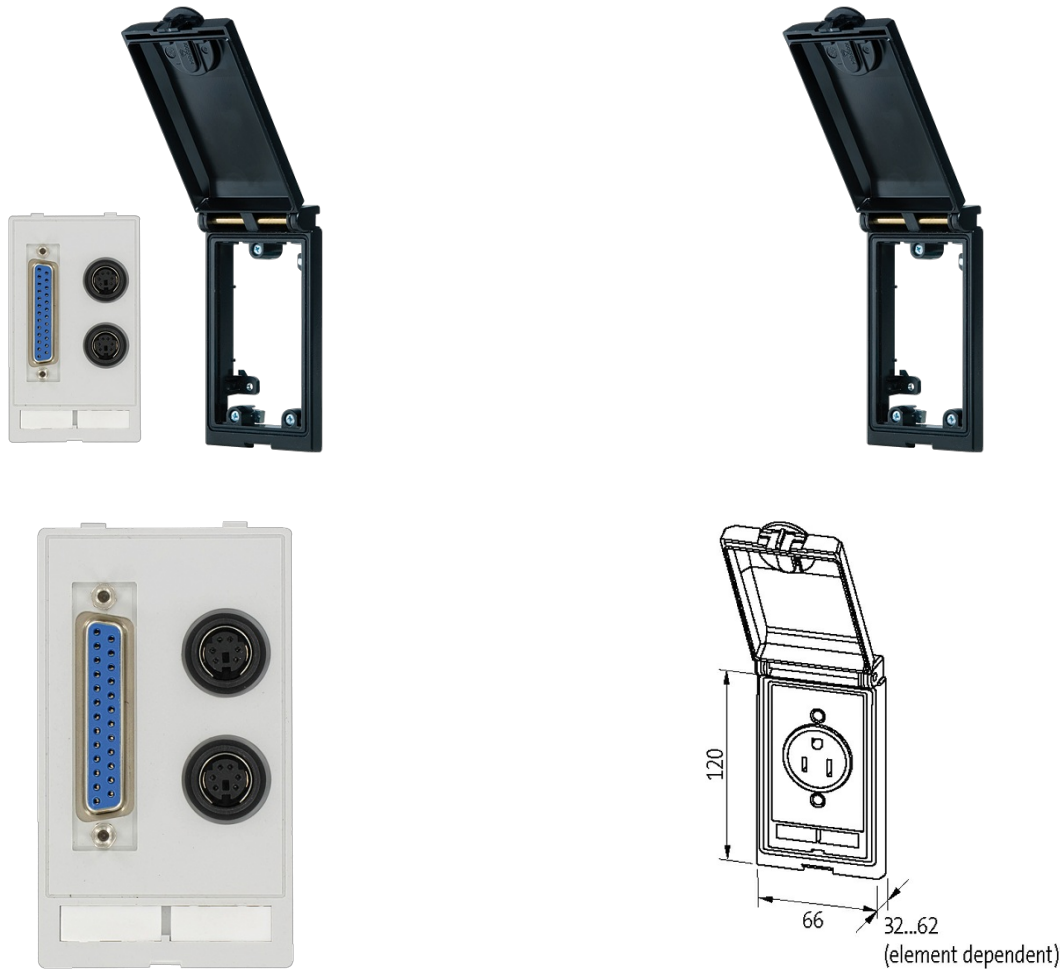


Modlink MSDD-set: Frame 4000-68112-0000000,

insert 4000-68000-1500000

[Link to Product](#)**Illustration**

Product may differ from Image

Frame

suitable for mounting with wall thickness	1...5 mm
Protection	IP65
Housing	Zinc die-casting, KTL coated
Temperature range	-10...+60 °C (storage temperature -25...+60 °C)

PS2

Operating voltage	30 V AC/DC
Operating current	1 A
No. of poles	6-pole
Connection cross section	max. 0.5 mm ² (AWG 20)
Connection front side	PS2 (female)
Connection rear side	PS2 (solder connection)
Locking of ports	Screw locking

SUB-D25

Operating voltage	48 V AC/DC
-------------------	------------

Operating voltage (UL Rating)	max. 30 V AC/42.4 V DC
-------------------------------	------------------------

Operating current	3 A
-------------------	-----

Operating current (UL Rating)	max. 175 mA
-------------------------------	-------------

No. of poles	25-pole
--------------	---------

Connection front side	SUB-D (female)
-----------------------	----------------

Connection rear side	SUB-D (male)
----------------------	--------------

Locking of ports	UNC 4...40 bolt
------------------	-----------------

Commercial data

country of origin	CZ
-------------------	----

customs tariff number	85366990
-----------------------	----------

EAN	4048879036436
-----	---------------

eClass	27189217
--------	----------

Packaging unit	1
----------------	---