

## MASI68 I/O EXTENSION MODULE

8 digital inputs

Expansion module

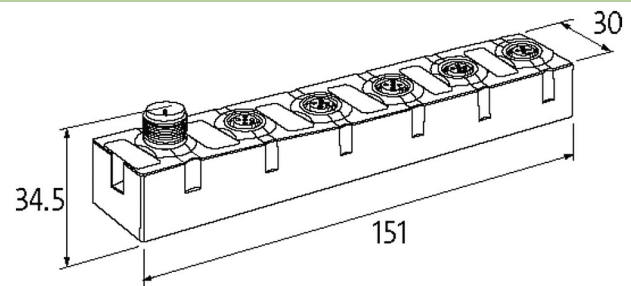
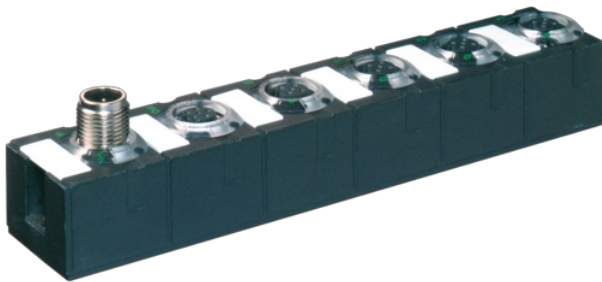
DI8 - 0.19 A (E) - 4× M12 (AB)

Connection cables are in the online shop under "Connection Technology".

Housing fully potted.

### Link to Product

#### Illustration



Product may differ from Image



#### Technical Data

Bus voltage (AS-Interface)	26.5...31.6 V DC
Address presetting	Slave 1: address 31 A; Slave 2: address 31 B
Profile (IO/ID/ID2 code)	2× S-0.A.2
Addressing	via master or M12 connection and programming device
Address range	1...62 (2× 1...31 A or B)
Total current	max. 250 mA

#### General data

Mounting method	screw fixing
Temperature range	-20...+60 °C (storage temperature -20...+70 °C)
Protection	IP68
Dimensions H×W×D	151×30×34.5 mm

#### Input

Sensor supply US	max. 190 mA from AS-Interface (short-circuit and overload protected)
Type	for 3-wire sensors or mechanical switches, PNP

#### Connections

Fieldbus	A-coded
I/O ports	M12, 4-pole

#### Diagnostic

Communication status	via LED
Diagnostic via LED	per module
Monitoring - no voltage	yes

#### Commercial data

country of origin	DE
customs tariff number	85176200

EAN	4048879048880
eClass	27242604
Packaging unit	1.000