

**M12 male on back A-cod. / MSUD double valve B-10mm**

PUR 3x0.75 bk UL/CSA 0m

Form B (10 mm) – M12, connector at the rear

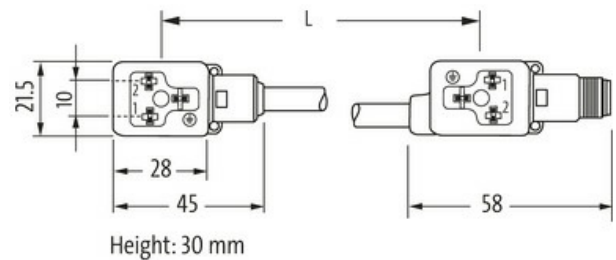
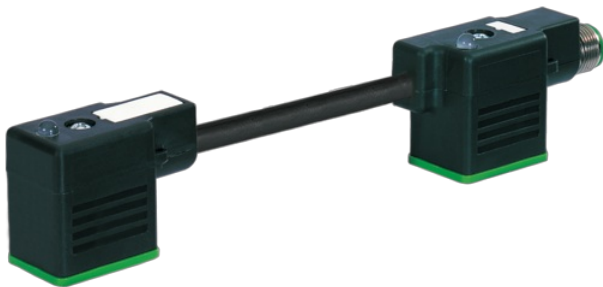
24 V AC  $\pm 20\%$  / DC  $\pm 25\%$ 

LED and suppression

Connection cable L = 200 mm

Plastic housings with good resistance against chemicals and oils.

The resistance to aggressive media should be individually tested for your application. Further details on request.

[Link to Product](#)**Illustration**

Product may differ from Image

**Form**

Form 41721

**Technical Data**

|                               |   |
|-------------------------------|---|
| Operating voltage             | 24 V AC $\pm 20\%$ / DC $\pm 25\%$            |
| Operating current per contact | max. 4 A                                      |
| Current consumption           | approx. 12 mA                                 |
| Switch off peak               | max. 55 V                                     |
| LED display                   | (yellow)                                      |
| Locking of ports              | M3 (recommended torque 0.4 Nm)                |
| Protection                    | IP66K, IP67 inserted and tightened (EN 60529) |
| Housing                       | Black plastic (gray on request)               |
| Switch off delay time         | max. 20 ms                                    |

**General data**

The information in this brochure has been compiled with the utmost care.  
Liability for the correctness completeness and topicality of the information is restricted to gross negligence. Version: 03/22

Temperature range -25...+85 °C, depending on cable quality

| <b>Cables</b>                      |  |
|------------------------------------|--|
| No./diameter of wires              | 3× 0.75 mm <sup>2</sup>  |
| Wire isolation                     | PVC (bk num, gnye)   |
| C-track properties                 | 2 Mio.   |
| Outer Ø                            | 5.9 mm ±5%   |
| Cable identification               | 626  |
| Cable Type                         | 2 (PUR/PVC)  |
| Approval (cable)                   | UL (AWM-Style 20549/1731), CSA; CE conform   |
| Cable weight [g/m]                 | 55,33 g  |
| Material (wire)                    | Cu wire, bare  |
| Resistor (core)                    | max. 26 Ω/km (20 °C)   |
| Single wire Ø (core)               | 0.15 mm  |
| Construction (core)                | 42× 0.15 mm (multi-strand wire class 6)  |
| Diameter (core)                    | 3× 0.75 mm <sup>2</sup>  |
| AWG                                | similar to AWG 18  |
| Material (wire isolation)          | PVC  |
| Material property (wire isolation) | CFC-, cadmium-, silicone- and lead-free  |
| Shore hardness (wire isolation)    | 43 ±5 D  |
| Wire-Ø incl. isolation             | 1.8 mm ±5%   |
| Color/numbering of wires           | bk numbered, gnye longitudinally striped   |
| Stranding combination              | 3 wires twisted  |
| Shield                             | no   |
| Material (jacket)                  | PUR/PVC  |
| Material property (jacket)         | CFC-, halogen-, cadmium-, silicone- and lead-free, matt, low-adhesion, machine easy to process, abrasion-resistant, hydrolysis and microbial resistant |
| Shore hardness (jacket)            | 80 ±5 A (PVC-under jacket); 85 ±5 A (PUR-jacket)   |
| Outer-Ø (jacket)                   | 5.9 mm ±5%   |
| Color (jacket)                     | black  |
| Cable labeling                     | see frame delivery specifications 7000-00000-001   |
| Jacket Color                       | black  |
| chemical resistance                | good resistance to oil, gasoline and chemicals   |
| Nominal voltage                    | UL 300 V AC  |
| Test voltage                       | 2000 V AC  |
| Current load capacity              | to DIN VDE 0298-4  |
| Temperature range (fixed)          | -30...+80 °C   |
| Temperature range (fixed)          | -30...+80 °C   |
| Temperature range (mobile)         | -5...+80 °C  |
| Temperature range (mobile)         | -5...+80 °C  |
| Bend radius (fixed)                | 10× outer Ø  |
| Bend radius (moving)               | 15× outer Ø  |
| Bend radius (moving)               | 15× outer Ø  |
| No. of bending cycles (C-track)    | max. 2 Mio. (25 °C)  |
| Travel speed (C-track)             | max. 3.3 m/s   |
| Acceleration (C-track)             | max. 5 m/s <sup>2</sup>  |
| Material (jacket)                  | PUR/PVC (UL/CSA)   |
| <b>Commercial data</b>             |  |
| country of origin                  | CZ   |
| customs tariff number              | 85444290   |
| EAN                                | 4048879143851  |
| eClass                             | 27143423   |
| Packaging unit                     | 1.000  |