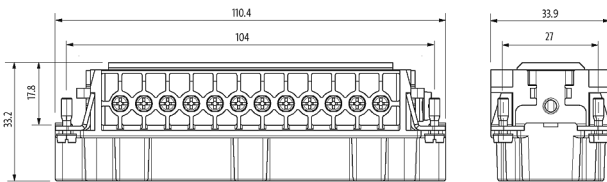
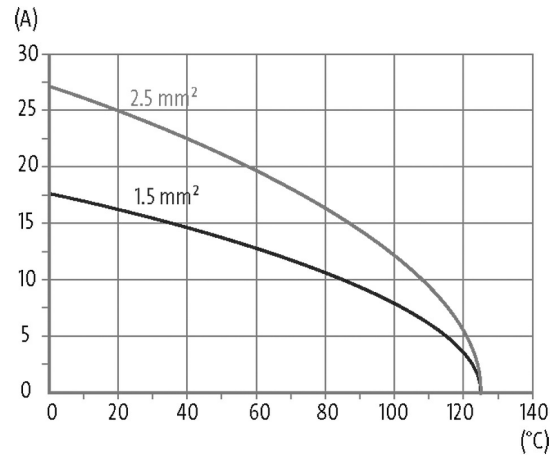
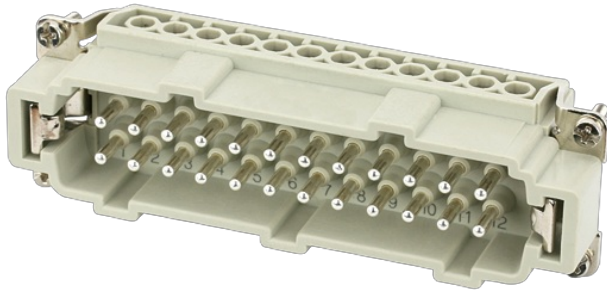


**B24 male 24-pole, screw t., 500 V, 16 A**

B24  
Male  
24-pole  
Screw terminal

[Link to Product](#)**Illustration**

Product may differ from Image

**Technical Data**

No. of poles	24 + PE
Connection	Screw terminal
Connection cross section	0.5...2.5 mm <sup>2</sup> (AWG 20...14)
Wire-Ø incl. isolation	max. 3.6 mm
Stripping length	7.5 mm
Operating voltage	500 V AC/DC
Operating current	16 A
Over voltage category	III
Material group	IIIb
Rated surge voltage	6.0 kV
Contact resistance	≤ 5 mΩ
Isolation resistance	≥ 10 <sup>8</sup> Ω
Mating cycles	min. 500
Insertion and withdrawal force	< 200 N
Holding force	> 150 N

Tightening torque (clamp screw) min. 0.5 Nm

**General data**

Type	Male
Size	B24
Pollution Degree	3
Dimensions H×W×D	33.2×33.9×110.4 mm
Material (contact carrier)	PA GF
Material (contact)	Brass
Material (contact surface)	Ag
Flammability class	V-0 (acc. to UL 94)
Climatic category	40/125/10
Temperature range	-40...+125 °C

**Cables**

Current load capacity see derating curve

**Commercial data**

country of origin	CZ
customs tariff number	85389099
EAN	4048879639286
eClass	27143424
Packaging unit	1