

MASI68 I/O MODULE K3

4 digital inputs, 4 digital, passive safety outputs

Compact module

DI4 - 0.2 A DO4 - 1.6 A (C) - 8× M12 (AB) (Y) (K3)

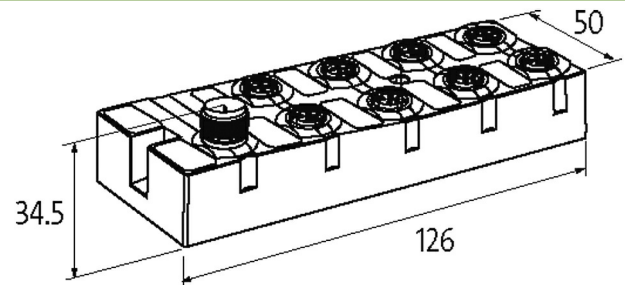
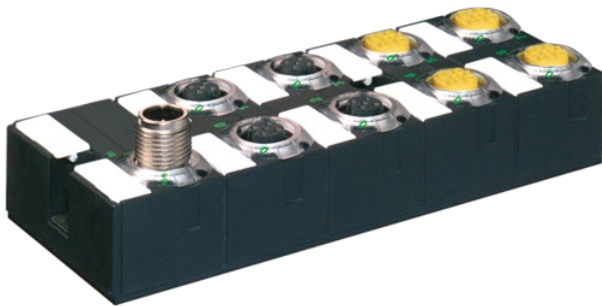
Output groups up to PLd (EN ISO 13849-1) can be switched off via safety relays

Connection cables are in the online shop under "Connection Technology".

Housing fully potted.

Link to Product

Illustration



Product may differ from Image



Technical Data

| | |
|----------------------------|---|
| Bus voltage (AS-Interface) | 26.5...31.6 V DC |
| Profile (IO/ID/ID2 code) | S-7.A.7 |
| Addressing | via master or M12 connection and programming device |
| Address range | 1...62 (1...31 A or B) |
| Total current | max. 250 mA |

General data

| | |
|-------------------|---|
| Mounting method | screw fixing |
| Temperature range | -20...+60 °C (storage temperature -20...+70 °C) |
| Protection | IP68 |
| Dimensions H×W×D | 126×50×34.5 mm |

Output

| | |
|------------------------------|---|
| M12 configuration | Y-wiring |
| Supply voltage | 24 V DC external (18...30.2 V DC) EN 61131-2 |
| Total current | max. 4 A |
| Switching current per output | max. 1.6 A (short-circuit and overload protected) |

Input

| | |
|------------------|--|
| Sensor supply US | max. 200 mA from AS-Interface (short-circuit and overload protected) |
| Type | for 3-wire sensors or mechanical switches, PNP |

Connections

| | |
|-----------|-------------|
| Fieldbus | A-coded |
| I/O ports | M12, 5-pole |

Diagnostic

| | |
|----------------------|---------|
| Communication status | via LED |
|----------------------|---------|

| | |
|--------------------|------------|
| Diagnostic via LED | per module |
|--------------------|------------|

| | |
|-------------------------|-----|
| Monitoring - no voltage | yes |
|-------------------------|-----|

Commercial data

| | |
|-------------------|----|
| country of origin | DE |
|-------------------|----|

| | |
|-----------------------|----------|
| customs tariff number | 85176200 |
|-----------------------|----------|

| | |
|-----|---------------|
| EAN | 4048879048910 |
|-----|---------------|

| | |
|--------|----------|
| eClass | 27242604 |
|--------|----------|

| | |
|----------------|-------|
| Packaging unit | 1.000 |
|----------------|-------|