

**B6 female 6-pole, crimp t., 500 V, 16 A**

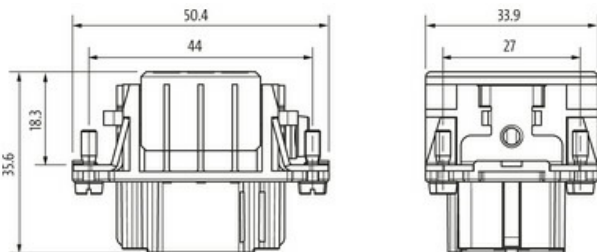
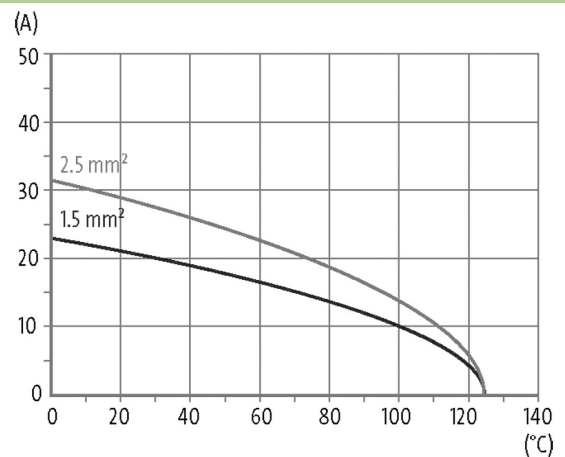
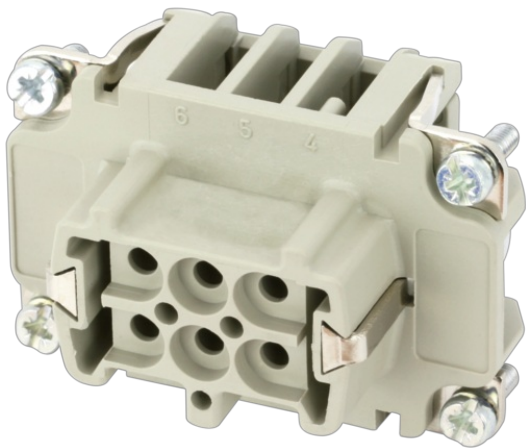
B6

Female

6-pole

Crimp

Technical data will be only guaranteed with Murrelektronik components.

[Link to Product](#)**Illustration**

Product may differ from Image

**Technical Data**

Operating voltage	500 V AC/DC
Rated surge voltage	6.0 kV
Operating current	16 A
No. of poles	6 + PE
Material group	IIIb
Mating cycles	min. 500
Connection	Crimp
Connection cross section	0.14...4 mm <sup>2</sup> (AWG 26...11)
Holding force	> 150 N
Insertion and withdrawal force	< 35 N
Isolation resistance	≥ 10 <sup>8</sup> Ω
Contact resistance	≤ 5 mΩ
Over voltage category	III

The information in this brochure has been compiled with the utmost care. Liability for the correctness completeness and topicality of the information is restricted to gross negligence. Version: 03/22

Wire-Ø incl. isolation max. 4.6 mm

#### General data

Material (contact)	Brass
Material (contact surface)	Ag
Pollution Degree	3
Temperature range	-40...+125 °C
Material (contact carrier)	PA GF
Flammability class	V-0 (acc. to UL 94)
Size	B6
Type	Female
Climatic category	40/125/10
Dimensions H×W×D	35.6×33.9×50.4 mm

#### Cables

Current load capacity see derating curve

#### Commercial data

country of origin	CZ
customs tariff number	85366990
EAN	4048879637640
eClass	27143424
Packaging unit	1.000