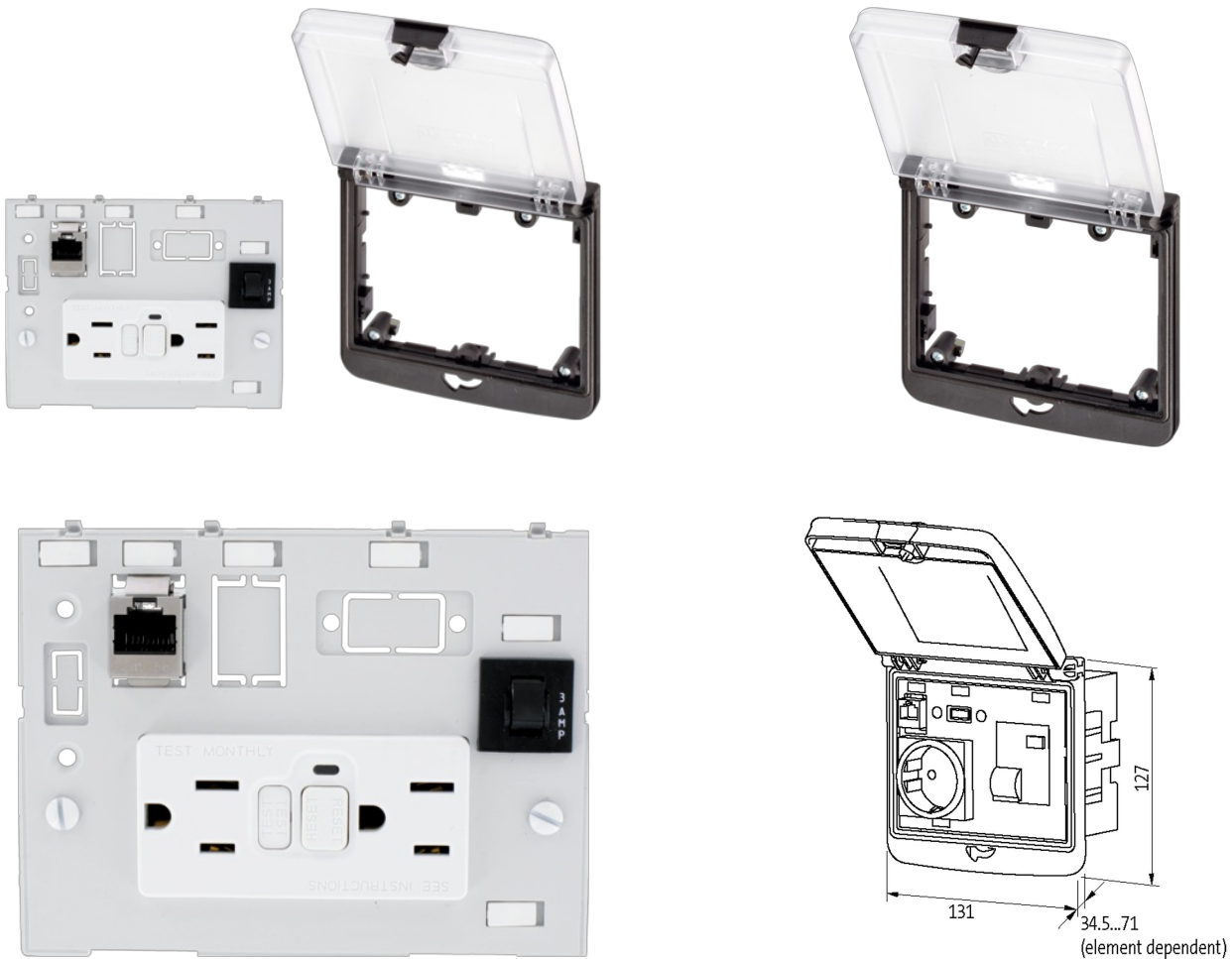


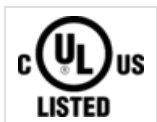
**Modlink MSDD set contains:**

Frame 4000-68522-0000001

with touch protection

[Link to Product](#)**Illustration**

Product may differ from Image

**Frame**

suitable for mounting with wall thickness	1...5 mm
Protection	IP65
Temperature range	-30...+70 °C (storage temperature -30...+80 °C)
Housing	Frame: plastic PA black, cap: plastic PC transparent

**RJ45**

Operating current (UL Rating)	max. 175 mA
Locking of ports	Snap In
Connection front side	RJ45

The information in this brochure has been compiled with the utmost care.  
 Liability for the correctness completeness and topicality of the information is restricted to gross negligence. Version: 03/22

Connection rear side	RJ45
Operating voltage (UL Rating)	max. 30 V AC/42.4 V DC
Specification	CAT5e, Class D, 100 MHz, (EN 50173-1)
<b>Fuse</b>	
Operating voltage	250 V AC/32 V DC
Continuous load	3 A
<b>USA</b>	
Operating current	15 A
Operating voltage	125 V AC
No. of poles	2 + PE
Connection	Screw terminals: max. 2× 6 mm <sup>2</sup> (AWG 10)
<b>Commercial data</b>	
country of origin	CN
customs tariff number	85366990
EAN	4048879691864
eClass	27189234
Packaging unit	1.000