



Main

Range of product	Altivar
Product or component type	EMC input filter
Range compatibility	Altivar Process ATV600 Altivar Process ATV900
Product compatibility	Variable speed drive ATV630 wall mount, motor : 7.5 kW, 380...480 V Variable speed drive ATV630 wall mount, motor : 11 kW, 380...480 V Variable speed drive ATV630 wall mount, motor : 15 kW, 380...480 V Variable speed drive ATV630 wall mount, motor : 4 kW, 200...240 V Variable speed drive ATV630 wall mount, motor : 5.5 kW, 200...240 V Variable speed drive ATV630 wall mount, motor : 7.5 kW, 200...240 V Variable speed drive ATV650 wall mount, motor : 7.5 kW, 380...480 V Variable speed drive ATV650 wall mount, motor : 11 kW, 380...480 V Variable speed drive ATV650 wall mount, motor : 15 kW, 380...480 V Variable speed drive ATV930 wall mount, motor : 7.5 kW, 380...480 V Variable speed drive ATV930 wall mount, motor : 11 kW, 380...480 V Variable speed drive ATV930 wall mount, motor : 15 kW, 380...480 V Variable speed drive ATV930 wall mount, motor : 4 kW, 200...240 V Variable speed drive ATV930 wall mount, motor : 5.5 kW, 200...240 V Variable speed drive ATV930 wall mount, motor : 7.5 kW, 200...240 V Variable speed drive ATV950 wall mount, motor : 7.5 kW, 380...480 V Variable speed drive ATV950 wall mount, motor : 11 kW, 380...480 V Variable speed drive ATV950 wall mount, motor : 15 kW, 380...480 V
Product specific application	Radio interference input filter
[In] rated current	35 A
Thermal losses	4.8 W
Network number of phases	Three phase

Complementary

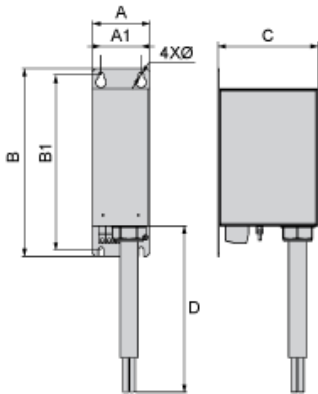
Electrical connection	Terminal 6 mm ² AWG 8
Motor cable length	<= 150 m shielded motor cable 4 kHz conforming to EN/IEC 61800-3 category C2, 380...480 V <= 300 m shielded motor cable 4 kHz conforming to EN/IEC 61800-3 category C3, 380...480 V <= 50 m shielded motor cable 4 kHz conforming to EN/IEC 61800-3 category C2, 200...240 V
Maximum earth leakage current	7.6 mA at 400 V 50 Hz TN 7.6 mA at 400 V 50 Hz TT
Power supply voltage	200...240 V 380...480 V
Tolerance	10 %

Mechanical robustness	Shocks conforming to IEC 60721-3-3 class 3M4 Vibrations conforming to IEC 60721-3-3 class 3M4
Width	80 mm
Height	302 mm
Depth	155 mm
Product weight	4.1 kg

Environment

IP degree of protection	IP20 mounting side by side IP21 with kit VW3A47903
Relative humidity	5...95 % without condensation conforming to IEC 61800-5-1
Ambient air temperature for operation	-10...50 °C without current derating 50...60 °C with current derating 1.5 % per °C
Ambient air temperature for storage	-40...70 °C
Operating altitude	0...1000 m without current derating 1000...4000 m with current derating 1 % per 100 m
Standards	EN/IEC 61800-3

Dimensions



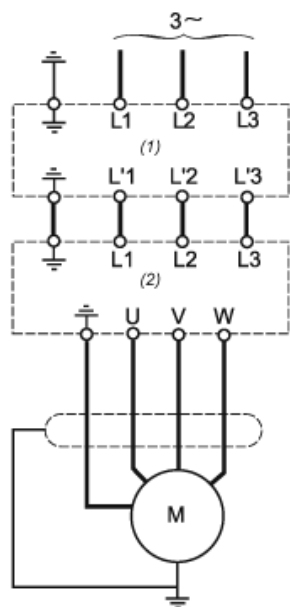
Dimensions in mm

A	B	C	D	A1	B1	Ø
80	302	155	750	50	282	7

Dimensions in in.

A	B	C	D	A1	B1	Ø
3.1	11.9	6.1	29.5	2	11.1	0.28

Recommended Schema



- (1) Filter
- (2) Drive