



Main

Range of product	Altivar
Product or component type	EMC input filter
Range compatibility	Altivar Process ATV600 Altivar Process ATV900
Product compatibility	Variable speed drive ATV630 wall mount, motor : 37 kW, 380...480 V Variable speed drive ATV630 wall mount, motor : 45 kW, 380...480 V Variable speed drive ATV630 wall mount, motor : 18.5 kW, 200...240 V Variable speed drive ATV630 wall mount, motor : 22 kW, 200...240 V Variable speed drive ATV650 wall mount, motor : 37 kW, 380...480 V Variable speed drive ATV650 wall mount, motor : 45 kW, 380...480 V Variable speed drive ATV930 wall mount, motor : 37 kW, 380...480 V Variable speed drive ATV930 wall mount, motor : 45 kW, 380...480 V Variable speed drive ATV930 wall mount, motor : 18.5 kW, 200...240 V Variable speed drive ATV930 wall mount, motor : 22 kW, 200...240 V Variable speed drive ATV950 wall mount, motor : 37 kW, 380...480 V Variable speed drive ATV950 wall mount, motor : 45 kW, 380...480 V
Product specific application	Radio interference input filter
[In] rated current	100 A
Thermal losses	12.4 W
Network number of phases	Three phase

Complementary

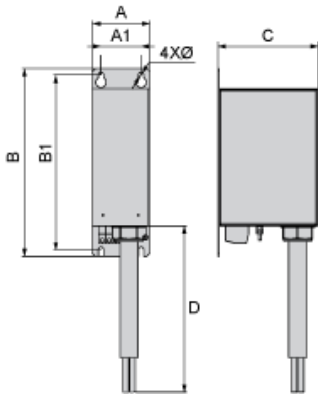
Electrical connection	Terminal 50 mm ² AWG 1/0
Motor cable length	<= 150 m shielded motor cable 4 kHz conforming to EN/IEC 61800-3 category C2, 380...480 V <= 300 m shielded motor cable 4 kHz conforming to EN/IEC 61800-3 category C3, 380...480 V <= 50 m shielded motor cable 4 kHz conforming to EN/IEC 61800-3 category C2, 200...240 V <= 150 m shielded motor cable 4 kHz conforming to EN/IEC 61800-3 category C3, 200...240 V
Maximum earth leakage current	13.9 mA at 400 V 50 Hz TN 13.9 mA at 400 V 50 Hz TT
Power supply voltage	200...240 V 380...480 V
Tolerance	10 %
Mechanical robustness	Shocks conforming to IEC 60721-3-3 class 3M4 Vibrations conforming to IEC 60721-3-3 class 3M4
Width	120 mm
Height	340 mm
Depth	180 mm
Product weight	6.5 kg

The information provided in this documentation contains general descriptions and/or technical characteristics of the performance of the products contained herein. This documentation is not intended as a substitute for and is not to be used for determining suitability or reliability of these products for specific user applications. It is the duty of any such user or integrator to perform the appropriate and complete risk analysis, evaluation and testing of the products with respect to the relevant specific application or use thereof. Neither Schneider Electric Industries SAS nor any of its affiliates or subsidiaries shall be responsible or liable for misuse of the information contained herein.

Environment

IP degree of protection	IP20 mounting side by side IP21 with kit VW3A47906
Relative humidity	5...95 % without condensation conforming to IEC 61800-5-1
Ambient air temperature for operation	-10...50 °C without current derating 50...60 °C with current derating 1.5 % per °C
Ambient air temperature for storage	-40...70 °C
Operating altitude	0...1000 m without current derating 1000...4000 m with current derating 1 % per 100 m
Standards	EN/IEC 61800-3

Dimensions



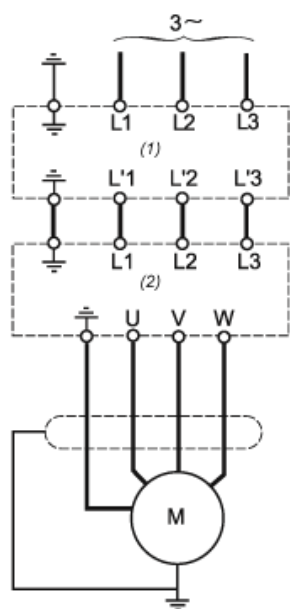
Dimensions in mm

A	B	C	D	A1	B1	Ø
120	340	180	1300	80	322	7

Dimensions in in.

A	B	C	D	A1	B1	Ø
4.7	13.4	7.1	51.2	3.1	12.7	0.28

Recommended Schema



- (1) Filter
- (2) Drive