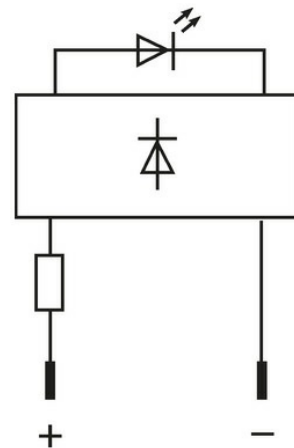


**LED-display 110V AC/DC green**

Product discontinued, no alternative

(green)  
110 V AC/DC  
Protection IP40

**[Link to Product](#)****Illustration**

Product may differ from Image

**Technical Data**

Operating voltage	110 V AC/DC (95...121 V AC/DC)
Current consumption	5 ±0.5 mA
Protection (IEC 60529/EN 60529)	IP40

**General data**

Temperature range	-40...+70 °C
Front panel hole diameter Ø	8 mm
LED Ø	5 mm
Housing	Adapter - PVC, gray
Connection	Faston 2.8x0.8 mm
Dimensions HxWxD	18.5x12x53 mm

**Commercial data**

country of origin	DE
customs tariff number	85318070
EAN	4048879040983
eClass	27261590
Packaging unit	10.000