

EXACT8, 6XM8, 4 POLE BASIC HOUSING

Without homerun-cable

6-way, 4-pole

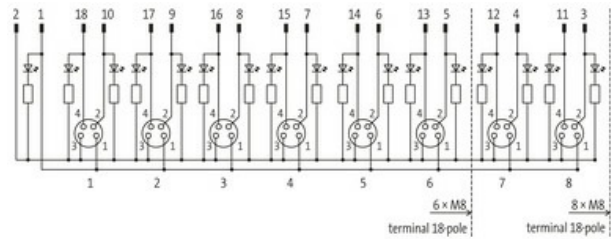
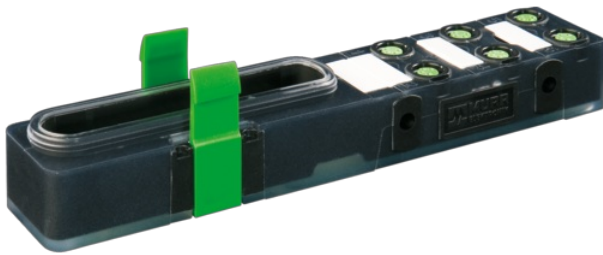
Inline face or side mounting

Plastic housings with good resistance against chemicals and oils.

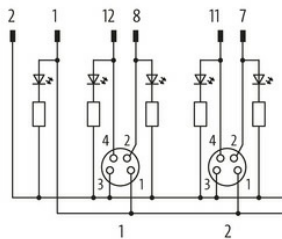
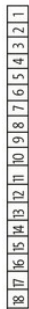
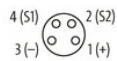
The resistance to aggressive media should be individually tested for your application. Further details on request.

Link to Product

Illustration



M8-Females 4-pole



for 2 signals per port

Product may differ from Image



Technical Data

Operating voltage	24 V DC
Operating current per contact	max. 2 A
Protection	IP65/IP67
Total current	max. 8 A

General data

Temperature range	-20...+70 °C, depending on cable quality
-------------------	--

Contact Layout

PIN 1	(+)
PIN 2	(NC)/(S2)
PIN 3	(-)
PIN 4	(NO)/(S1)

LED (green): Power / LED (yellow): (S1) / LED (white): Signal (S2)

Commercial data

country of origin	DE
customs tariff number	85369010
EAN	4048879055000
eClass	27143423
Packaging unit	1.000