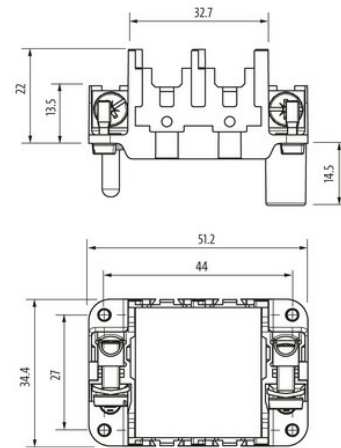
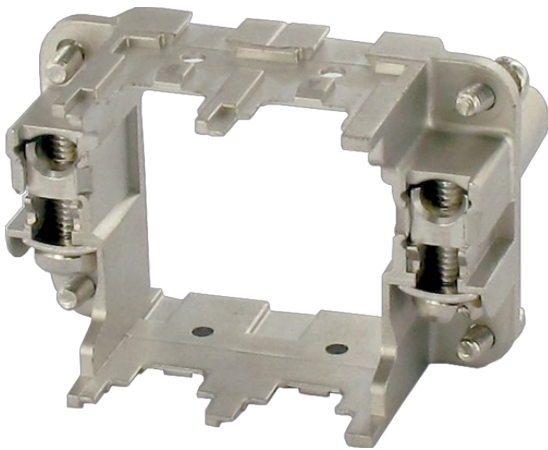


**B6 frame (female) for 2 modules**

a...b

B6  
Frame  
Female  
for 2 modules  
Technical data will be only guaranteed with Murrelektronik components.

**[Link to Product](#)****Illustration**

Product may differ from Image

**Technical Data**

No. of poles	2 PE
Connection	Screw terminal
Connection cross section	1...6 mm <sup>2</sup> (AWG 18...10)
Mating cycles (frame)	min. 500
Insertion and withdrawal force	< 60 N
Mating cycles (safety element)	min. 20
Holding force (PE contact)	250 N
Contact resistance	≤ 5 mΩ
Holding force (modules)	≥ 300 N (when stuck) ≥ 600 N (when pulling)

**General data**

Material (contact)	Brass
Material (contact surface)	Ni
Temperature range	-40...+125 °C
No. of module positions	2
Flammability class	V-0 (acc. to UL 94)
Material (safety element)	PC GF
Size	B6
Material (frame)	Zinc die casting, nickel-plated
Climatic category	40/125/10
Frame type	Female
Dimensions H×W×D	36.5×34.4×51.2 mm

**Commercial data**

country of origin	CZ
customs tariff number	85389099

EAN	4048879641739
eClass	27143424
Packaging unit	1.000