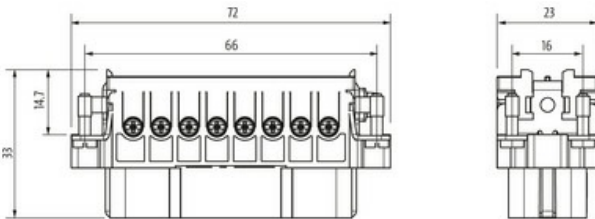
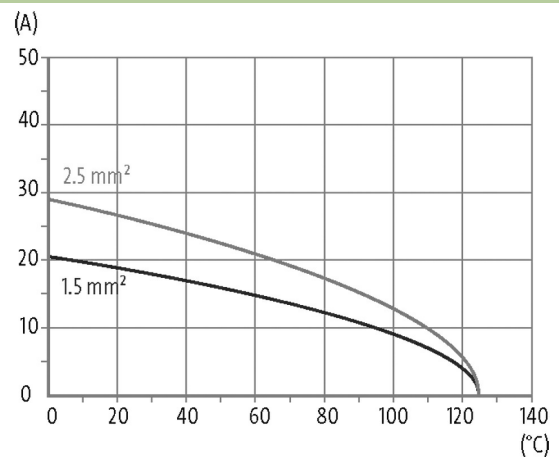
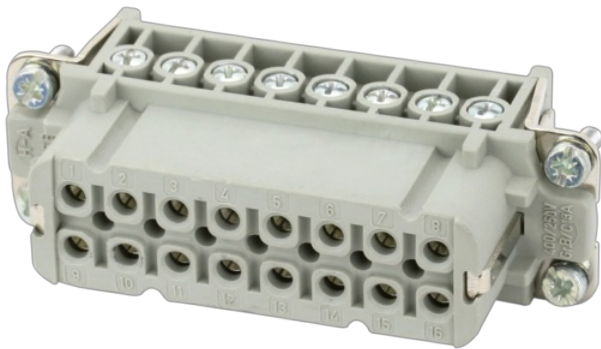


**A16 female 16-pole, screw t., 250 V, 16 A**

A16  
 Female  
 16-pole  
 Screw terminal  
 Technical data will be only guaranteed with Murrelektronik components.

**Link to Product****Illustration**

Product may differ from Image

**Technical Data**

Operating voltage	250 V AC/DC
Rated surge voltage	4.0 kV
Operating current	16 A
No. of poles	16 + PE
Material group	IIIb
Mating cycles	min. 500
Connection	Screw terminal
Connection cross section	0.5...2.5 mm <sup>2</sup> (AWG 20...14)
Pull-out force	min. 50 N
Holding force	> 150 N
Tightening torque (clamp screw)	min. 0.4 Nm
Insertion and withdrawal force	< 220 N
Stripping length	7.8 mm
Isolation resistance	≥ 10 <sup>8</sup> Ω

The information in this brochure has been compiled with the utmost care.  
 Liability for the correctness completeness and topicality of the information is restricted to gross negligence. Version: 03/22

Contact resistance	≤ 5 mΩ
Over voltage category	III
Wire-Ø incl. isolation	max. 4.6 mm

#### General data

Material (contact)	Brass
Material (contact surface)	Ag
Pollution Degree	3
Temperature range	-40...+125 °C
Material (contact carrier)	PA GF
Flammability class	V-0 (acc. to UL 94)
Size	A16
Type	Female
Climatic category	40/125/21
Dimensions H×W×D	33×23×72 mm

#### Cables

Current load capacity	see derating curve
-----------------------	--------------------

#### Commercial data

country of origin	CZ
customs tariff number	85366990
EAN	4048879637923
eClass	27143424
Packaging unit	1.000