

POWER DISTRIBUTOR CUBE 67

4x M12, 6-pole

Power distributor (4x M12)

System accessories

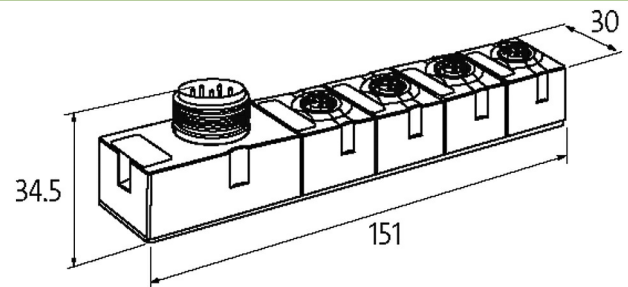
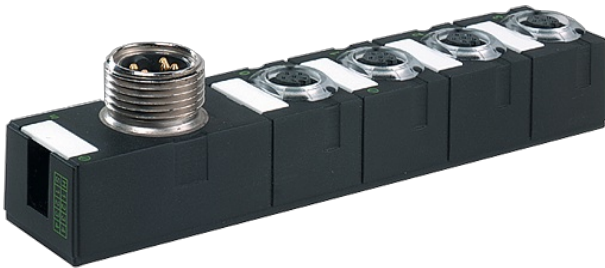
Protection IP67

Connection cables are in the online shop under "Connection Technology".

Housing fully potted.

Link to Product

Illustration



Product may differ from Image



General data

Protection	IP67
Mounting method	2-hole screw mounting
Temperature range	0...+55 °C (storage temperature -20...+75 °C)
Dimensions HxWxD	150x30x34.5 mm

Module supply

Operating voltage	24 V DC (EN 61131-2)
-------------------	----------------------

Voltage inputs

Input voltage	24 V DC (EN 61131-2)
Connection	7/8" (male), 5-pole
Current load capacity	max. 9 A

Voltage output signals

Connection	Female M12, 6-pole
Current load capacity	max. 4 A

Diagnostic

Monitoring - no voltage	yes
Short-circuit and overload	yes

Commercial data

country of origin	DE
customs tariff number	85389099
EAN	4048879047852
eClass	27242690
Packaging unit	1