

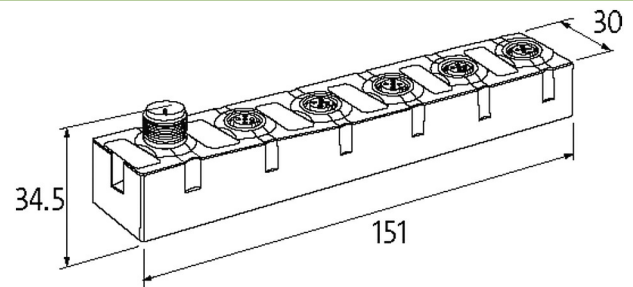
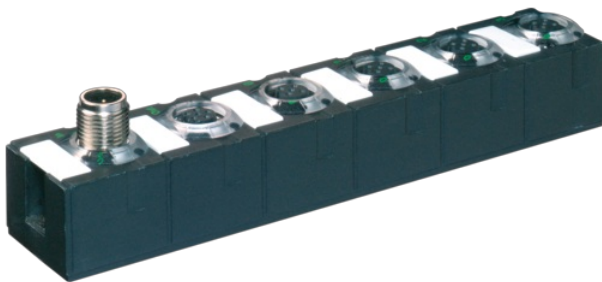
CUBE67 I/O EXTENSION MODULE

4 analog inputs (RTD)

Expansion module
AI4 - (E) 4x M12 (RTD)
for resistors and temperature
Connection cables are in the online shop under "Connection Technology".
Housing fully potted.

Link to Product

Illustration



Product may differ from Image

General data

Mounting method	2-hole screw mounting
Temperature range	0...+55 °C (storage temperature -20...+75 °C)
Protection	IP67
Dimensions H×W×D	150×30×34.5 mm

Input

Connection	2-, 3-, 4-wire technology
Accuracy	max. ±0.5% (of range limit)
Conversion time (analog)	approx. 58 ms per channel
Accuracy (Ni)	max. ±1% (of range limit)
Resolution (analog)	15 Bit + sign
Sensor type	Pt100, 200, 500, 1000; Ni100, 120, 200, 500, 1000; R 0...3000 Ω

Internal communication

LED display	US: sensor supply and internal supply voltage (green: OK); UA: actuator supply (green: OK)
Current consumption	max. 50 mA

Connections

Fieldbus	via internal system connection
Sensor-system/actuator supply	via internal system connection (max. 2x 4 A)
I/O ports	M12 (female) 5-pole, A-coded

Diagnostic

Communication status	via LED
Diagnostic via LED	per module and channel
Diagnostic via BUS	per module and channel
Actuator warning	per channel via LED and BUS
Monitoring - under voltage	yes
Monitoring - no voltage	yes
Wire break upper/lower limit overload	per channel via LED and BUS
Short-circuit and overload	yes

Commercial data

country of origin	DE
customs tariff number	85389099
EAN	4048879048200
eClass	27242601
Packaging unit	1.000