

**B24 male 24-pole, Push-in, 500 V, 16 A**

E-Series

B24

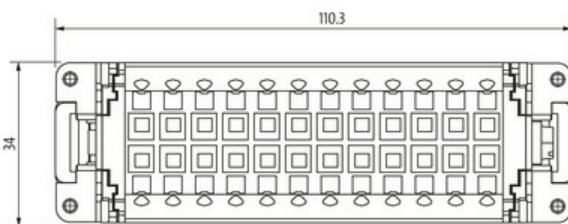
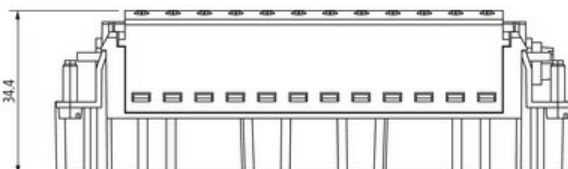
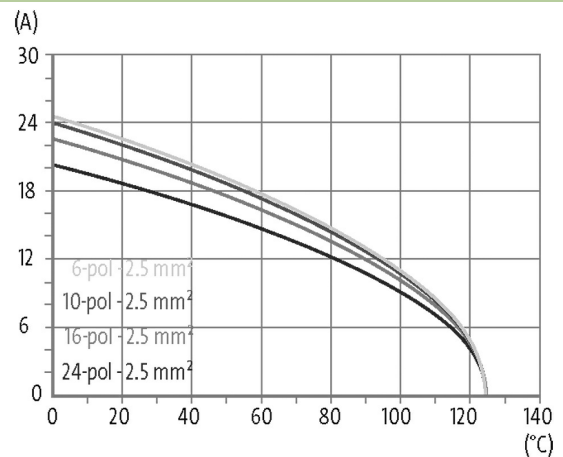
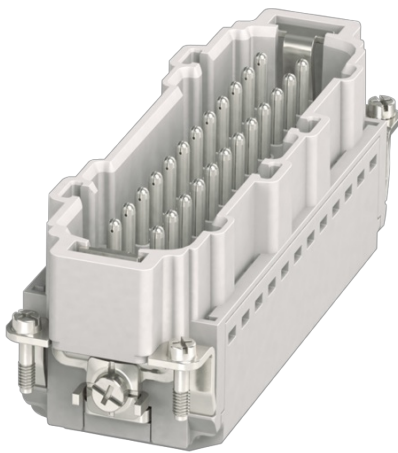
Male

24-pole

Push-In terminals

Technical data will be only guaranteed with Murrelektronik components.

Please use wire end ferrule.

**[Link to Product](#)****Illustration**

Product may differ from Image

**Technical Data**

Operating voltage	500 V AC/DC
Rated surge voltage	6.0 kV
Operating current	16 A
No. of poles	24 + PE
Mating cycles	min. 500

The information in this brochure has been compiled with the utmost care.  
Liability for the correctness completeness and topicality of the information is restricted to gross negligence. Version: 03/22

Connection	Push-In terminals
Connection cross section	0.14...2.5 mm <sup>2</sup> (AWG 26...14)
Stripping length	8...10 mm
Over voltage category	III

#### General data

Material (contact)	Brass
Material (contact surface)	Ag
Pollution Degree	3
Temperature range	-40...+125 °C
Material (contact carrier)	PC
Flammability class	V-0 (acc. to UL 94)
Size	B24
Type	Male
Climatic category	40/125/10
Dimensions H×W×D	33.7×33.9×110.4 mm

#### Cables

Current load capacity	see derating curve
-----------------------	--------------------

#### Commercial data

country of origin	CN
customs tariff number	85389099
EAN	4048879665025
eClass	27143424
Packaging unit	1.000