

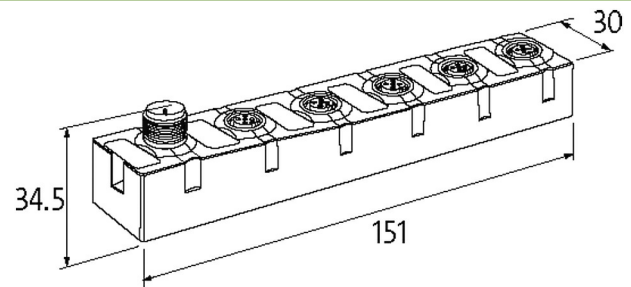
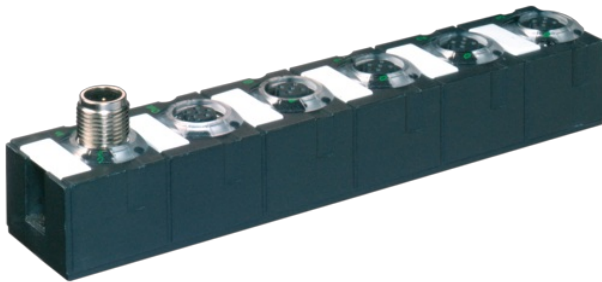
MASI68 AI4 RTD E 4XM12

AI4 - (E) RTD

4x M12

Connection cables are in the online shop under "Connection Technology".

Housing fully potted.

[Link to Product](#)**Illustration**

Product may differ from Image

**Technical Data**

Bus voltage (AS-Interface)	26.5...31.6 V DC
Profile (IO/ID/ID2 code)	S-7.3.E
Addressing	via master or M12 connection and programming device
Address range	1...31
Total current	max. 100 mA

General data

Mounting method	screw fixing
Temperature range	0...+55 °C (storage temperature -40...+85 °C)
Protection	IP68
Dimensions HxWxD	151x30x34.5 mm

Input

Connection	2-, 3-, 4-wire technology
Resolution (analog)	15 Bit + sign
Measuring current	1.25 mA
Sensor type	Pt100

Connections

Fieldbus	A-coded
I/O ports	M12, 4-pole

Diagnostic

Communication status	via LED
Diagnostic via LED	per module
Actuator warning	no
Monitoring - no voltage	yes
Wire break upper/lower limit overload	per module via LED and BUS

Commercial data

country of origin	DE
-------------------	----

customs tariff number	85176200
EAN	4048879321280
eClass	27242601
Packaging unit	1.000