

B16 female 4+2-pole, screw t., 830/400 V, 80/16 A

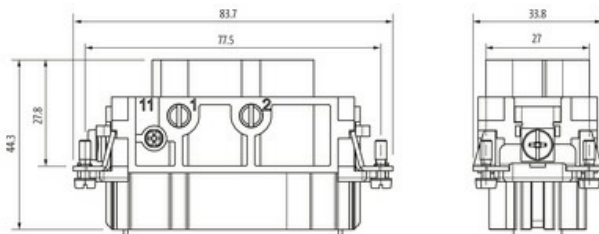
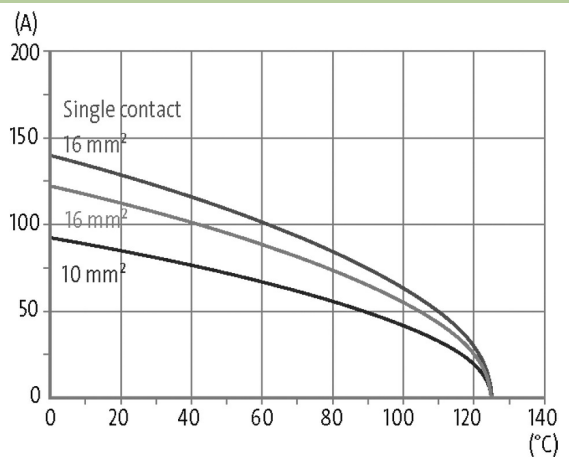
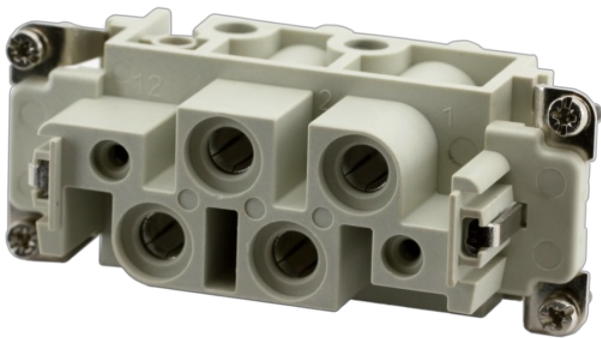
B16

Female

4+2-pole

Screw terminal

Technical data will be only guaranteed with Murrelektronik components.

[Link to Product](#)**Illustration**

Product may differ from Image

**Technical Data**

Operating voltage	830 V AC/DC (Power); 400 V AC/DC (Signal)
Rated surge voltage	8.0 kV
Operating current	80 A (Power); 16 A (Signal)
No. of poles	4 + 2 + PE
Material group	IIIa
Mating cycles	min. 500
Connection	Screw terminal
Connection cross section	1.5...16 mm ² (AWG 16...5)
Holding force	> 500 N (Power); > 400 N (Signal)
Tightening torque (clamp screw)	min. 2.5 Nm (Power); min. 0.5 Nm (Signal)
Insertion and withdrawal force	< 100 N
Stripping length	14 mm (Power); 6 mm (Signal)
Isolation resistance	≥ 10 ⁸ Ω

The information in this brochure has been compiled with the utmost care.

Liability for the correctness completeness and topicality of the information is restricted to gross negligence. Version: 03/22

Murrelektronik Ltd. | 5 Albion Street, Pendlebury Industrial Estate, Swinton | Manchester M27 4FG | Fon +44 161 728 3133 | Fax +44 161 728 3130 | shop@murrelektronik.co.uk | shop.murrelektronik.co.uk

Contact resistance	≤ 5 mΩ
Over voltage category	III
Wire-Ø incl. isolation	max. 11 mm (Power); max. 4.8 mm (Signal)

General data

Material (contact)	Brass
Material (contact surface)	Ag
Pollution Degree	3
Temperature range	-40...+125 °C
Material (contact carrier)	PC GF
Flammability class	V-0 (acc. to UL 94)
Size	B16
Type	Female
Climatic category	40/125/21
Dimensions H×W×D	42×33.8×83.7 mm

Cables

Current load capacity	see derating curve
-----------------------	--------------------

Commercial data

country of origin	CZ
customs tariff number	85389099
EAN	4048879637404
eClass	27143424
Packaging unit	1.000