

CUBE67 I/O EXTENSION MODULE, VA

4 analog inputs

Expansion module

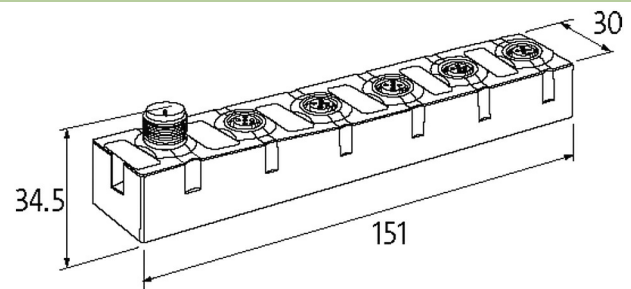
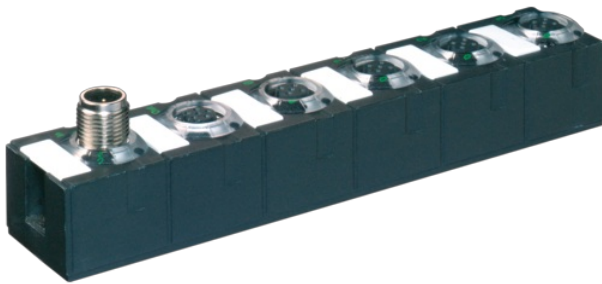
AI4 - (E) 4× M12 (U)

Voltage

Metal parts: Stainless steel

Connection cables are in the online shop under "Connection Technology".

Housing fully potted.

[Link to Product](#)**Illustration**

Product may differ from Image

**General data**

| | |
|-------------------|---|
| Mounting method | 2-hole screw mounting |
| Temperature range | 0...+55 °C (storage temperature -20...+75 °C) |
| Protection | IP67 |
| Dimensions H×W×D | 151×30×34.5 mm |

Input

| | |
|--------------------------|--|
| Sensor supply US | 24 V DC (EN 61131-2), max. 200 mA (M12 female), short-circuit and overload protected |
| Accuracy | max. ±0.5% (of range limit) |
| Conversion time (analog) | approx. 2 ms (per channel) |
| Resolution (analog) | 15 Bit + sign |

Internal communication

| | |
|---------------------|--|
| LED display | US: sensor supply and internal supply voltage (green: OK); UA: actuator supply (green: OK) |
| Current consumption | max. 50 mA |

Connections

| | |
|-------------------------------|--|
| Fieldbus | via internal system connection |
| Sensor-system/actuator supply | via internal system connection (max. 2× 4 A) |
| I/O ports | M12 (female) 5-pole, A-coded |

Diagnostic

| | |
|----------------------------|-----------------------------|
| Communication status | via LED |
| Diagnostic via LED | per module and channel |
| Diagnostic via BUS | per module and channel |
| Actuator warning | per channel via LED and BUS |
| Monitoring - under voltage | yes |
| Monitoring - no voltage | yes |

The information in this brochure has been compiled with the utmost care.

Liability for the correctness completeness and topicality of the information is restricted to gross negligence. Version: 03/22

Murrelektronik Ltd. | 5 Albion Street, Pendlebury Industrial Estate, Swinton | Manchester M27 4FG | Fon +44 161 728 3133 | Fax +44 161 728 3130 | shop@murrelektronik.co.uk | shop.murrelektronik.co.uk

| | |
|---------------------------------------|-----------------------------|
| Wire break upper/lower limit overload | per channel via LED and BUS |
| Short-circuit and overload | yes |

Commercial data

| | |
|-----------------------|---------------|
| country of origin | DE |
| customs tariff number | 85389099 |
| EAN | 4048879044837 |
| eClass | 27242601 |
| Packaging unit | 1.000 |