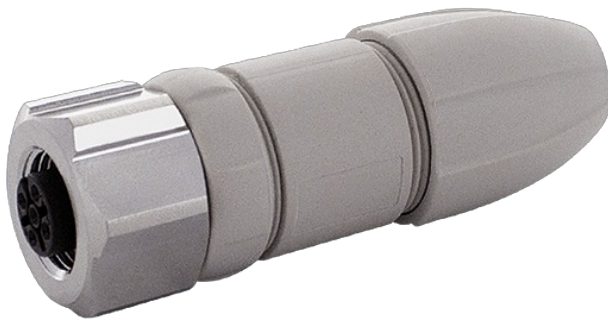


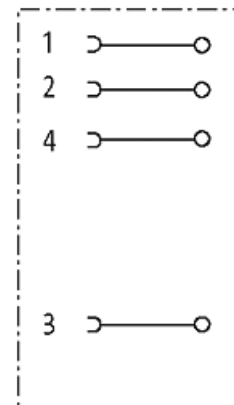
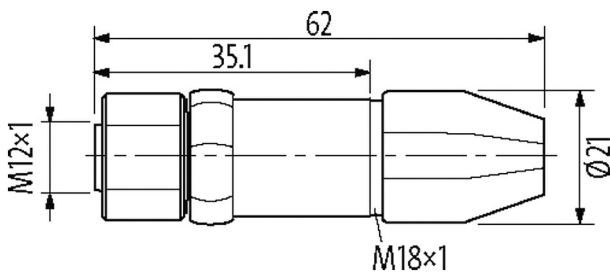
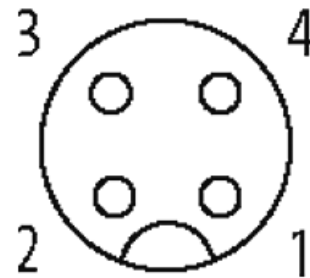
M12 female 0° wireable scw term. F&B PRO4-pol. max.1,0mm² 3,5-6mm

M12 F&B Pro
 Female straight
 4-pole
 Screw terminals

The resistance to aggressive media should be individually tested for your application. Further details on request.

[Link to Product](#)**Illustration**

Female



Product may differ from Image

Technical Data

Operating voltage	max. 250 V AC/300 V DC
Operating current per contact	max. 4 A
Connection cross section	0.25...1.0 mm ²
Sealing range (cable Ø)	3.5...6.0 mm
Locking of ports	Screw thread (M12×1 mm) recommended torque 0.6 Nm
Compression gland	M12 (SW19)
Protection	IP65, IP68, IP69K inserted and tightened (EN 60529)
Material	PA
Locking material	Stainless steel

General data

Safety class	II
Temperature range	-25...+100 °C

The information in this brochure has been compiled with the utmost care.
 Liability for the correctness completeness and topicality of the information is restricted to gross negligence. Version: 03/22

Material (gasket) EPDM

Commercial data

country of origin	DE
customs tariff number	85366990
EAN	4048879804608
eClass	27279221
Packaging unit	1