

A16 female 16-pole, Push-in, 250 V, 20 A

A16

Female

16-pole

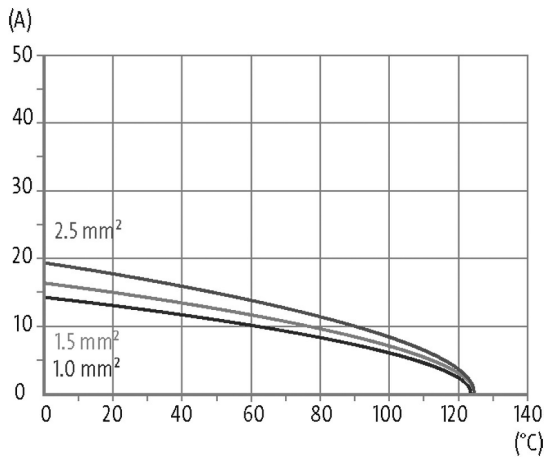
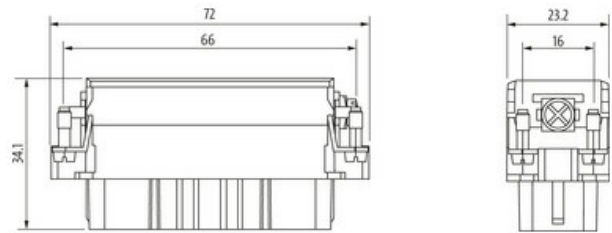
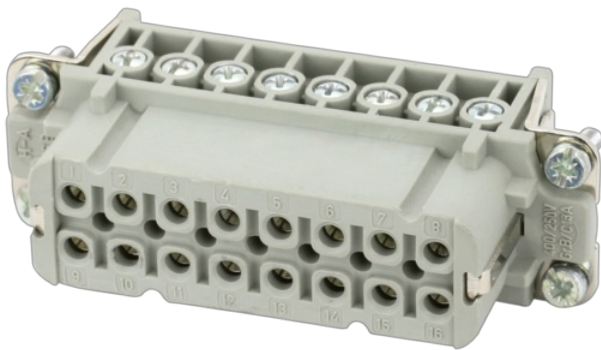
Push-In terminals

Technical data will be only guaranteed with Murrelektronik components.

Please use wire end ferrule.

[Link to Product](#)

Illustration



Product may differ from Image



Technical Data

Operating voltage	250 V AC/DC
Rated surge voltage	4.0 kV
Operating current	16 A
No. of poles	16 + PE
Mating cycles	min. 500
Connection	Push-In terminals
Connection cross section	0.14...2.5 mm ² (AWG 26...14)
Stripping length	8 mm

Over voltage category III

General data

Material (contact)	Copper alloy
Material (contact surface)	Ag
Pollution Degree	3
Temperature range	-40...+125 °C
Material (contact carrier)	PC
Flammability class	V-0 (acc. to UL 94)
Size	A16
Type	Female
Climatic category	40/125/21
Dimensions H×W×D	34.1×23.2×72 mm

Cables

Current load capacity see derating curve

Commercial data

country of origin	CN
customs tariff number	85366990
EAN	4048879764582
eClass	27143424
Packaging unit	1.000