

CUBE67+ BUS NODE

Ethercat

Cube67+
EtherCAT

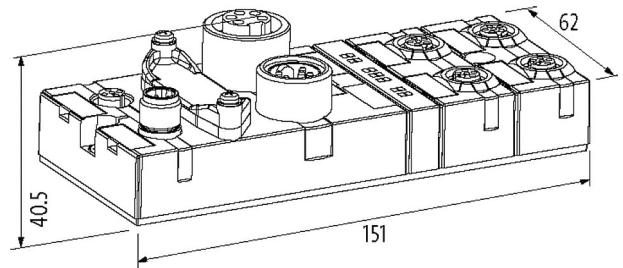
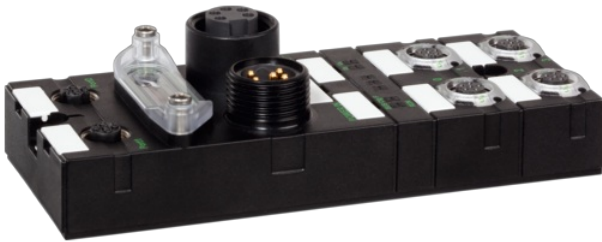
Connection cables are in the online shop under "Connection Technology".

Housing fully potted.

Cube67+ modules can only be operated on Cube67+, EtherNet/IP, PROFIBUS + PROFINET bus nodes.

Link to Product

Illustration



Product may differ from Image



General data

Mounting method	2-hole screw mounting
Temperature range	0...+55 °C (storage temperature -20...+75 °C)
Protection	IP67
Dimensions HxWxD	151x62x40.5 mm

Module supply

Operating voltage	24 V DC (EN 61131-2)
Current consumption	max. 200 mA

Cube system

Module capacity	max. 32
I/O capacity	max. 65 636 Byte (Input), max. 65 636 Byte (Output)

Connections

Fieldbus	Ethernet 10/100 Mbit/s; M12, D-coded
Sensor-system/actuator supply	7/8", 5-pole, 2x max. 8 A
Internal system connection	4x M12 (female) A-coded, 6-pole, 2x max. 4 A

EtherCAT

Addressing	automatic
------------	-----------

Diagnostic

Communication status	via LED and BUS
Diagnostic via LED	per module and channel
Diagnostic via BUS	per module and channel
Monitoring - under voltage	yes
Monitoring - no voltage	yes
Short-circuit and overload	yes

Commercial data

The information in this brochure has been compiled with the utmost care.

Liability for the correctness completeness and topicality of the information is restricted to gross negligence. Version: 03/22

Murrelektronik Ltd. | 5 Albion Street, Pendlebury Industrial Estate, Swinton | Manchester M27 4FG | Fon +44 161 728 3133 | Fax +44 161 728 3130 | shop@murrelektronik.co.uk | shop.murrelektronik.co.uk

country of origin	DE
customs tariff number	85389099
EAN	4048879313148
eClass	27242608
Packaging unit	1.000