

**B10 female 10-pole, Push-in, 500 V, 16 A**

E-Series

B10

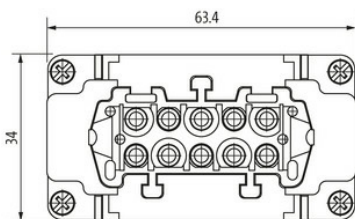
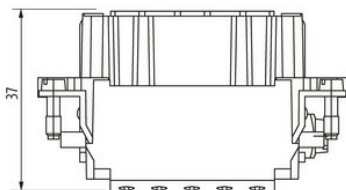
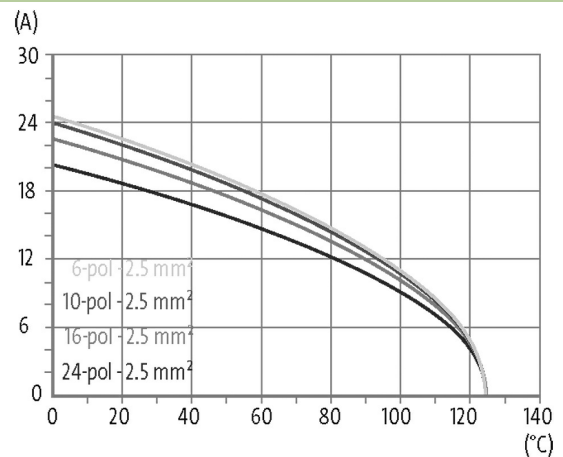
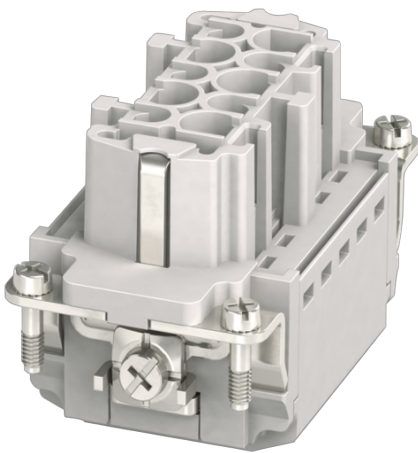
Female

10-pole

Push-In terminals

Technical data will be only guaranteed with Murrelektronik components.

Please use wire end ferrule.

[Link to Product](#)**Illustration**

Product may differ from Image

**Technical Data**

|                     |             |
|---------------------|-------------|
| Operating voltage   | 500 V AC/DC |
| Rated surge voltage | 6.0 kV      |
| Operating current   | 16 A        |
| No. of poles        | 10 + PE     |
| Mating cycles       | min. 500    |

|                          |  |
|--------------------------|--|
| Connection               | Push-In terminals                        |
| Connection cross section | 0.14...2.5 mm <sup>2</sup> (AWG 26...14) |
| Stripping length         | 8...10 mm                                |
| Over voltage category    | III                                      |

#### General data

|                            |                     |
|----------------------------|---------------------|
| Material (contact)         | Brass               |
| Material (contact surface) | Ag                  |
| Pollution Degree           | 3                   |
| Temperature range          | -40...+125 °C       |
| Material (contact carrier) | PC                  |
| Flammability class         | V-0 (acc. to UL 94) |
| Size                       | B10                 |
| Type                       | Female              |
| Climatic category          | 40/125/10           |
| Dimensions H×W×D           | 35.6×33.9×63.4 mm   |

#### Cables

|                       |                    |
|-----------------------|--------------------|
| Current load capacity | see derating curve |
|-----------------------|--------------------|

#### Commercial data

|                       |               |
|-----------------------|---------------|
| country of origin     | CN            |
| customs tariff number | 85389099      |
| EAN                   | 4048879664479 |
| eClass                | 27143424      |
| Packaging unit        | 1.000         |