

## CUBE67 I/O EXTENSION MODULE

4 analog outputs (U)

Expansion module

AO4 - (E) 4x M12 (U)

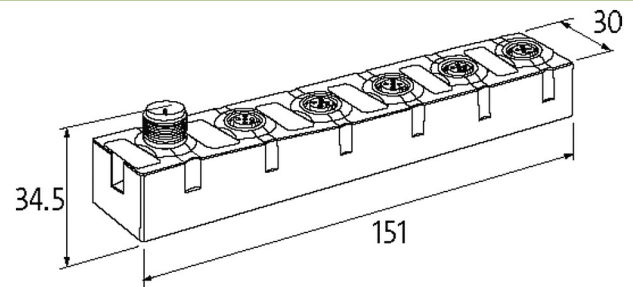
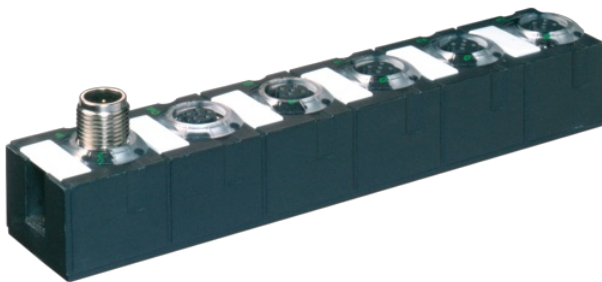
Voltage

Connection cables are in the online shop under "Connection Technology".

Housing fully potted.

### Link to Product

#### Illustration



Product may differ from Image

#### General data

Mounting method	2-hole screw mounting
Temperature range	0...+55 °C (storage temperature -20...+75 °C)
Protection	IP67
Dimensions H×W×D	150×30×34.5 mm

#### Output

Supply voltage	24 V DC (EN 61131-2), via system connection (max. 4 A)
Resolution (analog)	11 Bit + sign
Conversion time (analog)	approx. 1 ms (per channel)
Actuator supply UA	24 V DC (EN 61131-2), max. 1.6 A (M12 female), short-circuit and overload protected
Accuracy	max. ±0.5% (of range limit)

#### Internal communication

LED display	US: sensor supply and internal supply voltage (green: OK); UA: actuator supply (green: OK)
Current consumption	max. 50 mA

#### Voltage output signals

Input range	±10 V DC, 0...10 V DC
Load	min. 500 Ω

#### Connections

Fieldbus	via internal system connection
Sensor-system/actuator supply	via internal system connection (max. 2x 4 A)
I/O ports	M12 (female) 5-pole, A-coded

#### Diagnostic

Communication status	via LED
Diagnostic via LED	per module and channel
Diagnostic via BUS	per module and channel
Actuator warning	per channel via LED and BUS
Monitoring - under voltage	yes
Monitoring - no voltage	yes
Wire break upper/lower limit overload	per channel via LED and BUS

Short-circuit and overload                      yes

**Commercial data**

country of origin	DE
customs tariff number	85389099
EAN	4048879292214
eClass	27242601
Packaging unit	1.000