

**B24 female 24-pole, crimp t., 500 V, 16 A**

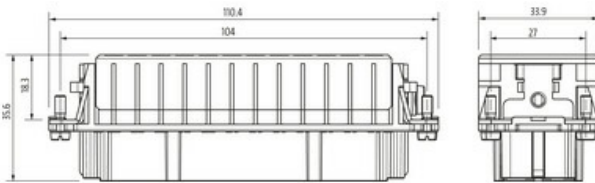
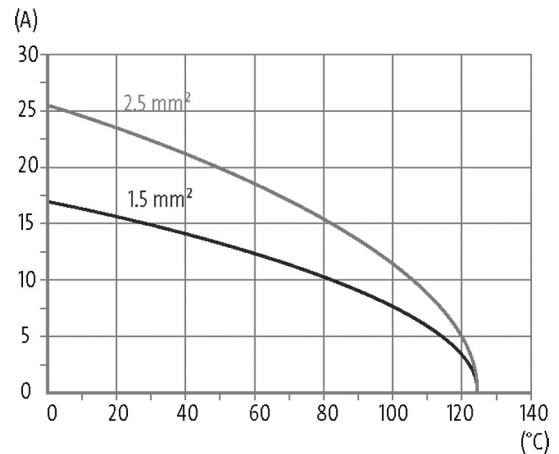
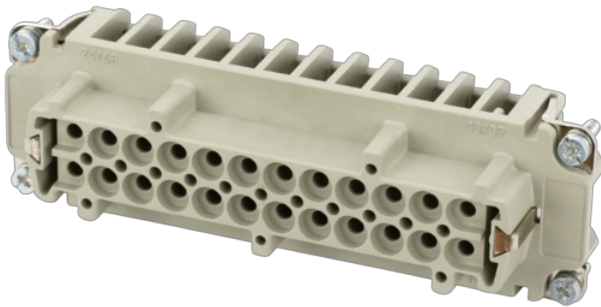
B24

Female

24-pole

Crimp

Technical data will be only guaranteed with Murrelektronik components.

[Link to Product](#)**Illustration**

Product may differ from Image

**Technical Data**

Operating voltage	500 V AC/DC
Rated surge voltage	6.0 kV
Operating current	16 A
No. of poles	6 + PE
Material group	IIIb
Mating cycles	min. 500
Connection	Crimp
Connection cross section	0.14...4 mm <sup>2</sup> (AWG 26...11)
Holding force	> 150 N
Insertion and withdrawal force	< 35 N
Isolation resistance	≥ 10 <sup>8</sup> Ω
Contact resistance	≤ 5 mΩ
Over voltage category	III
Wire-Ø incl. isolation	max. 4.6 mm

**General data**

The information in this brochure has been compiled with the utmost care.

Liability for the correctness completeness and topicality of the information is restricted to gross negligence. Version: 03/22

Murrelektronik Ltd. | 5 Albion Street, Pendlebury Industrial Estate, Swinton | Manchester M27 4FG | Fon +44 161 728 3133 | Fax +44 161 728 3130 | shop@murrelektronik.co.uk | shop.murrelektronik.co.uk

Material (contact)	Brass
Material (contact surface)	Ag
Pollution Degree	3
Temperature range	-40...+125 °C
Material (contact carrier)	PA GF
Flammability class	V-0 (acc. to UL 94)
Size	B6
Type	Female
Climatic category	40/125/10
Dimensions H×W×D	35.6×33.9×110.4 mm

**Cables**

Current load capacity	see derating curve
-----------------------	--------------------

**Commercial data**

country of origin	CZ
customs tariff number	85389099
EAN	4048879638555
eClass	27143424
Packaging unit	1.000