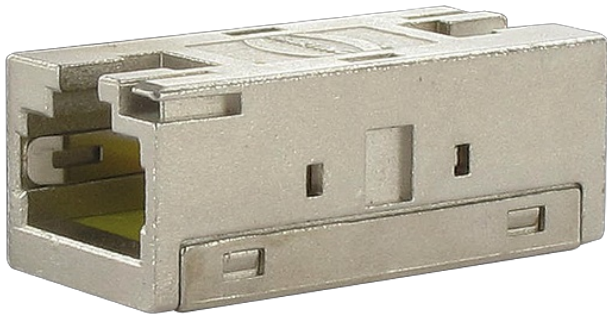


MODLINK MSDD GENDER CHANGER

RJ45 Cat 6A female/female shielded

Gender Changer
1 × RJ45, 8-pole metal, CAT6A (female/female)
Zinc die casting, nickel-plated

[Link to Product](#)**Illustration**

Product may differ from Image

General data

Dimensions H×W×D	13.2×15.6×34.4 mm
------------------	-------------------

RJ45

Operating voltage (UL Rating)	max. 30 V AC/42.4 V DC
Operating current (UL Rating)	max. 175 mA
Connection front side	RJ45
Connection rear side	RJ45
Locking of ports	Snap In
Specification	CAT6A

Commercial data

country of origin	LV
customs tariff number	85366990
EAN	4048879600866
eClass	27189217
Packaging unit	1