

## EMC-SUPPRESSORS FOR VALVE PLUG

Diode and LED, 24VDC/60VA/W

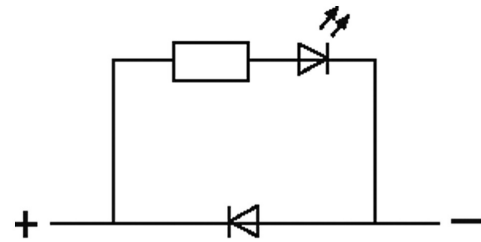
24 V AC/DC

Diode + LED (green)

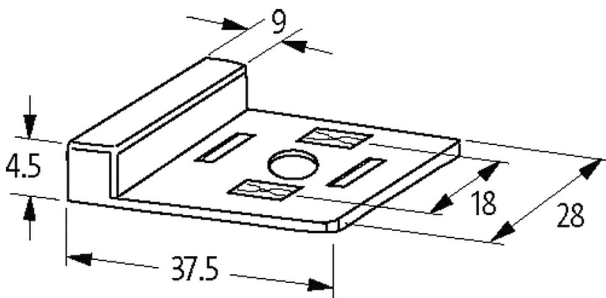
Remove plug gasket when fitting adapter. Other LED colors on request.

### [Link to Product](#)

#### Illustration



LED + Diode



Product may differ from Image

#### Technical Data

Switch off peak	1 V
LED display	(yellow opac)
Input voltage	20...27 V AC/DC
Material	PUR
max. power (W)	max. 60 W (VA)
Pin spacing	Form A (18 mm)
Switch off delay time	max. 200 ms

#### General data

Material (contact)	Silvered bronze
Temperature range	-20...+60 °C
Dimensions H×W×D	4.5×37.5×28 mm

#### Commercial data

country of origin	DE
customs tariff number	85363010
EAN	4048879011310

---

eClass	27371013
Packaging unit	1.000

---