

B24 female 46-pole, crimp t., 500 V, 16 A

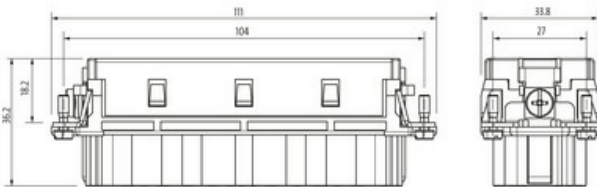
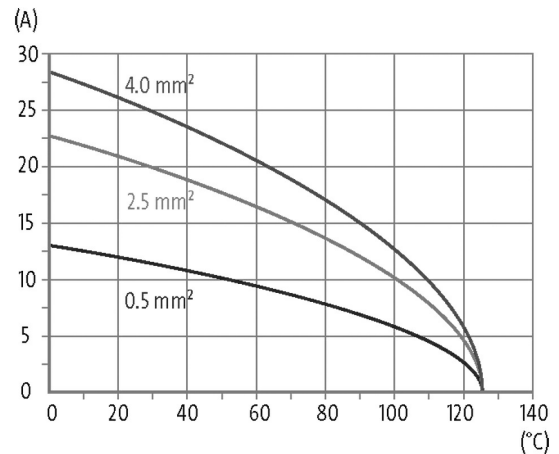
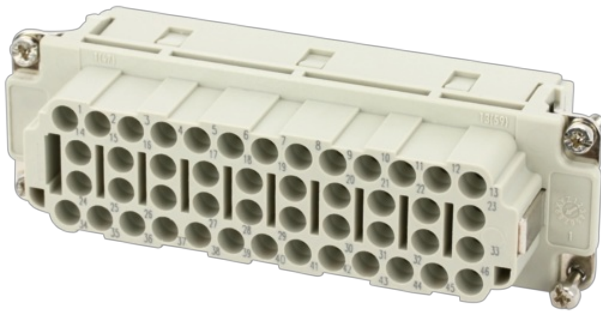
B24

Female

46-pole

Crimp

Technical data will be only guaranteed with Murrelektronik components.

[Link to Product](#)**Illustration**

Product may differ from Image

**Technical Data**

Operating voltage	500 V AC/DC
Rated surge voltage	6.0 kV
Operating current	16 A
No. of poles	46 + PE
Material group	IIIa
Mating cycles	min. 500
Connection	Crimp
Connection cross section	0.14...4 mm ² (AWG 26...11)
Holding force	> 70 N
Insertion and withdrawal force	< 250 N
Isolation resistance	≥ 10 ⁸ Ω
Contact resistance	≤ 5 mΩ
Over voltage category	III
Wire-Ø incl. isolation	max. 4.8 mm

General data

The information in this brochure has been compiled with the utmost care.

Liability for the correctness completeness and topicality of the information is restricted to gross negligence. Version: 03/22

Murrelektronik Ltd. | 5 Albion Street, Pendlebury Industrial Estate, Swinton | Manchester M27 4FG | Fon +44 161 728 3133 | Fax +44 161 728 3130 | shop@murrelektronik.co.uk | shop.murrelektronik.co.uk

Material (contact)	Brass
Material (contact surface)	Ag
Pollution Degree	3
Temperature range	-40...+125 °C
Material (contact carrier)	PC GF
Flammability class	V-0 (acc. to UL 94)
Size	B24
Type	Female
Climatic category	40/125/21
Dimensions H×W×D	36.2×33.8×111 mm

Cables

Current load capacity	see derating curve
-----------------------	--------------------

Commercial data

country of origin	CZ
customs tariff number	85389099
EAN	4048879638722
eClass	27143424
Packaging unit	1.000