

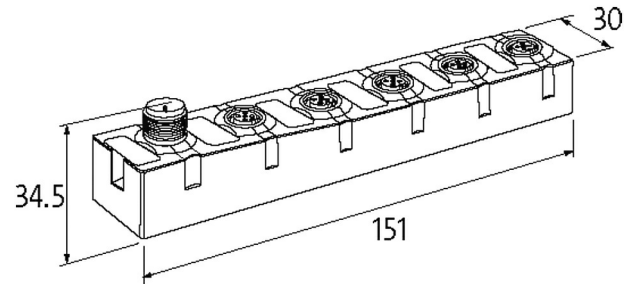
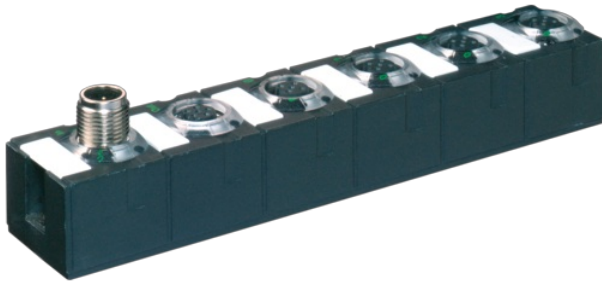
MASI68 I/O EXTENSION MODULE

4 analog Inputs U/I configurable

AI4 - (E) 4× M12 (UI)

Connection cables are in the online shop under "Connection Technology".

Housing fully potted.

[Link to Product](#)**Illustration**

Product may differ from Image

**Technical Data**

Bus voltage (AS-Interface)	26.5...31.6 V DC
Profile (IO/ID/ID2 code)	S-7.3.E
Addressing	via master or M12 connection and programming device
Address range	1...31
Total current	max. 100 mA

General data

Mounting method	screw fixing
Temperature range	-20...+70 °C (storage temperature -40...+85 °C)
Protection	IP68
Dimensions H×W×D	151×30×34.5 mm

Input

Sensor supply US	24 V DC (EN 61131-2), max. 100 mA (M12 female), short-circuit and overload protected
Resolution (analog)	15 Bit + sign

Connections

Fieldbus	A-coded
I/O ports	M12, 4-pole

Diagnostic

Communication status	via LED
Diagnostic via LED	per module
Monitoring - no voltage	yes
Wire break upper/lower limit overload	per module via LED and BUS

Commercial data

country of origin	DE
customs tariff number	85389099
EAN	4048879496681

eClass	27242601
Packaging unit	1.000
