






withdrawable circuit breaker with guide frame 3-pole, size iii, IEC In=5000A to 690V, AC50/60Hz Icu=100kA at 500V rear connection horizontal Overcurrent release ETU 27 LSING protection adjustable 0.4-1 in Ground fault/N protection integrated Motorized/manual operating mechanism with spring charging motor AC 50/60 Hz 110-127 V AC or 110-125 V DC Activation 50/60 Hz 110 V AC, 110 V DC With 1st auxiliary release Shunt release "F", F1 50/60 Hz 110 V AC/110 V DC, 100% on-load factor With 2nd auxiliary release "R", F3 Undervoltage, instant. 110-127 V AC, 110-125 V DC 4NO+4NC

Model	
product brand name	SENTRON
product designation	ACB
design of the product	IEC 60947-2
design of the actuating element	Pushbutton
type of the driving mechanism	Manual/motorized operating mechanism with mechanical and electrical closing
type of the driving mechanism / motor drive	Yes
design of the overcurrent release	ETU27B
General technical data	
number of poles	3
size of the circuit-breaker	3
utilization category	B
circuit-breaker / Design	3WL1
Voltage	
Rated insulation voltage $U_i$	1 000 V
insulation voltage / rated value	1 000 V
operating voltage	
• at AC / at 50/60 Hz / rated value	690 V
Protection class	
protection class IP	IP20
protection class IP / on the front	IP20
protection function of the overcurrent release	LSING
Dissipation	
power loss [W]	
• for rated value of the current / at AC / in hot operating state / per pole	350 W
• maximum	1 050 W
Current	
operational current	
• at 40 °C / rated value	5 000 A
• at 45 °C / rated value	5 000 A
• at 50 °C / rated value	5 000 A
• at 55 °C / rated value	5 000 A
• at 60 °C / rated value	5 000 A
• at 65 °C / rated value	5 000 A
• at 70 °C / rated value	5 000 A
continuous current / rated value / maximum	5 000 A
continuous current / rated value	5 000 A
adjustable current response value current	
• of instantaneous short-circuit trip unit / minimum	50 000 A
• of instantaneous short-circuit trip unit / maximum	50 000 A
Main circuit	
operating frequency	

<ul style="list-style-type: none"> <li>• 1 / rated value</li> <li>• 2 / rated value</li> </ul>	50 Hz		
	60 Hz		
<b>Auxiliary circuit</b>			
number of NC contacts / for auxiliary contacts	4		
number of NO contacts / for auxiliary contacts	4		
<b>Suitability</b>			
suitability for use	Plant / motor protection		
<b>Product details</b>			
product component			
<ul style="list-style-type: none"> <li>• trip indicator</li> <li>• voltage trigger</li> <li>• undervoltage release</li> </ul>	Yes		
	Yes		
	Yes		
design of the auxiliary switch	4 NO + 4 NC		
product extension / optional / motor drive	No		
<b>Product function</b>			
product function			
<ul style="list-style-type: none"> <li>• grounding protection</li> <li>• phase failure detection</li> </ul>	Yes		
	Yes		
<b>Display and operation</b>			
display version	without display		
<b>Short circuit</b>			
breaking capacity operating short-circuit current (Ics)			
<ul style="list-style-type: none"> <li>• at 415 V / rated value</li> <li>• at 500 V / rated value</li> <li>• at 690 V / rated value</li> </ul>	100 kA		
	100 kA		
	85 kA		
breaking capacity maximum short-circuit current (Icu)			
<ul style="list-style-type: none"> <li>• at 415 V / rated value</li> <li>• at 500 V / rated value</li> <li>• at 690 V / rated value</li> </ul>	100 kA		
	100 kA		
	85 kA		
<b>Connections</b>			
arrangement of electrical connectors / for main current circuit	Main connection rear side horizontal		
type of electrical connection / for main current circuit	busbar connection		
<b>Mechanical Design</b>			
height	466.5 mm		
width	704 mm		
depth	456 mm		
fastening method	drawer unit		
<b>Environmental conditions</b>			
ambient temperature / during operation			
<ul style="list-style-type: none"> <li>• minimum</li> <li>• maximum</li> </ul>	-20 °C		
	70 °C		
ambient temperature / during storage			
<ul style="list-style-type: none"> <li>• minimum</li> <li>• maximum</li> </ul>	-40 °C		
	70 °C		
<b>General Product Approval</b>		<b>EMC</b>	<b>Declaration of Conformity</b>
	<a href="#">Confirmation</a>		
			
		EG-Konf.	
<b>Test Certificates</b>		<b>Marine / Shipping</b>	

[Special Test Certificate](#)

[Miscellaneous](#)

[Type Test Certificates/Test Report](#)



Marine / Shipping

other



[CCS / China Classification Society](#)



[Confirmation](#)

[Miscellaneous](#)

[Environmental Confirmations](#)

other

Dangerous Good

[Miscellaneous](#)

[Transport Information](#)

### Further information

Industry Mall (Online ordering system)

<https://mall.industry.siemens.com/mall/en/en/Catalog/product?mfb=3WL1350-4DG36-5FM4>

Service&Support (Manuals, Certificates, Characteristics, FAQs,...)

<https://support.industry.siemens.com/cs/ww/en/ps/3WL1350-4DG36-5FM4>

Image database (product images, 2D dimension drawings, 3D models, device circuit diagrams, ...)

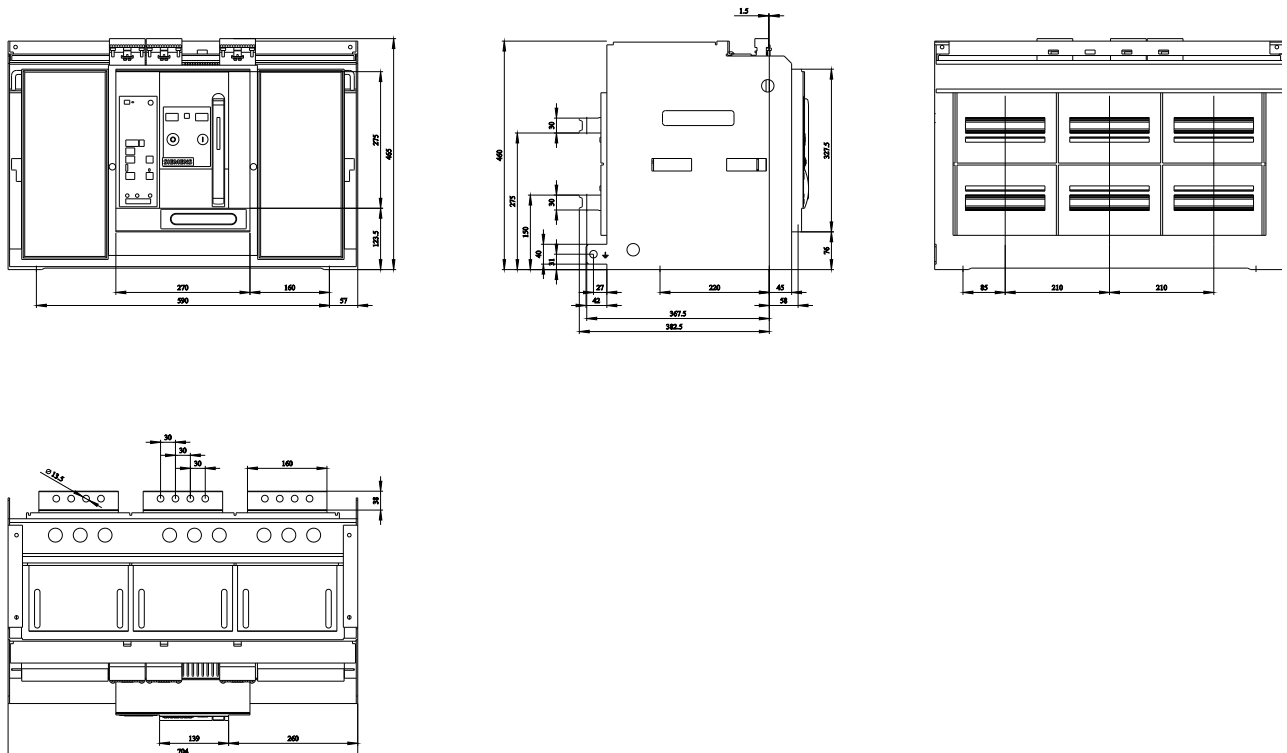
[http://www.automation.siemens.com/bilddb/cax\\_en.aspx?mfb=3WL1350-4DG36-5FM4](http://www.automation.siemens.com/bilddb/cax_en.aspx?mfb=3WL1350-4DG36-5FM4)

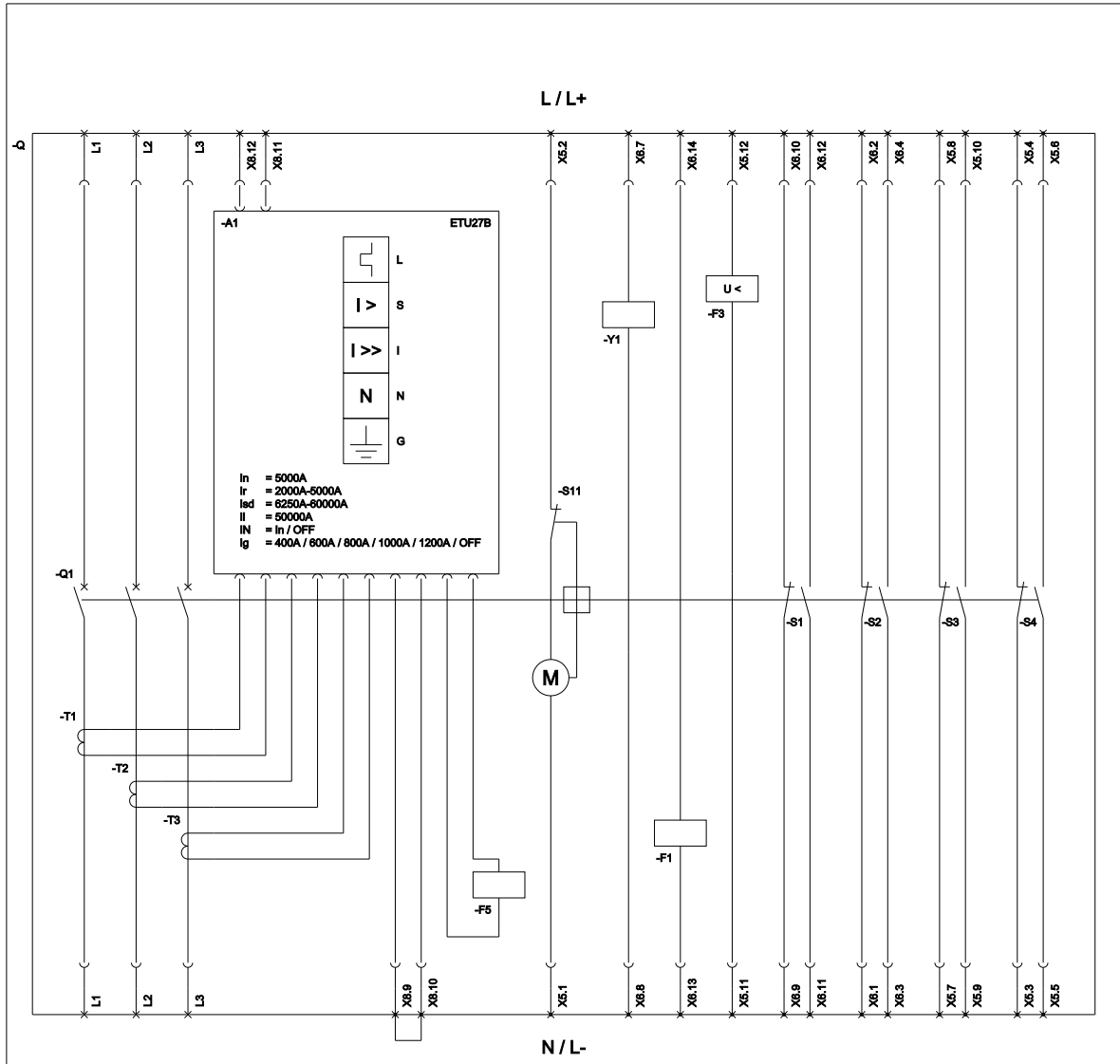
CAX-Online-Generator

<http://www.siemens.com/cax>

Tender specifications

<http://www.siemens.com/specifications>





L (Long Time Delay / Überlastschutz); S (Short Time Delay / Kurzschlusschutz, kurzzeitverzögerter); I (Instantaneous / Kurzschlusschutz, unverzögerter); N (Neutral Protection / Neutralleiterschutz);  
 G (Ground Fault Protection / Erdschlusschutz); S11 (internal motor shutdown switch, if spring is tensioned / Interner Motorschaltrelaischalter, wenn Feder gespannt); F1 (1st auxiliary release / Erste Hilfsentlastung);  
 F3 (Undervoltage release / Unterspannungsauslösung); F5 (Magnet for trip unit / Auslösemagnet); S1 - S8 (Auxiliary switch / Hilfschalter); Y1 (Closing coil / Einschaltmagnet);

last modified:

3/5/2020

