

Data sheet for SIMOTICS S-1FT2

Article No. : 1FT2206-2AC01-0MB0

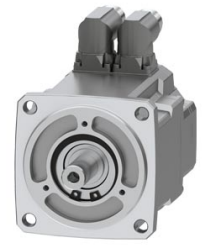


Figure similar

Client order no. :
Order no. :
Offer no. :
Remarks :

Item no. :
Consignment no. :
Project :

Basic motor data

Motor type	Permanent-magnet synchronous motor, Natural cooling, IP65
Motor type	Compact
Static torque	6.00 Nm
Static current	2.8 A
Maximum torque	18.00 Nm
Maximum current	10.3 A
Maximum speed	4,300 rpm
Rotor moment of inertia	7.8000 kgcm ²
Weight	6.3 kg

Rated data

SINAMICS S120, BLM/SLM 3AC 400V

Rated speed	2,000 rpm
Rated torque	5.50 Nm
Rated current	2.8 A
Rated power	1.15 kW

Encoder system

Encoder system	Encoder AM22DQC: Absolute encoder 22 bit + 12 bit multiturn
----------------	---

Motor connection

Connection type	Double cable connection for S120
Connector size	M23

Mechanical data

Design acc. to Code I	IM B5 (IM V1, IM V3)
Vibration severity grade	Grade A
Shaft height	63
Flange size (AB)	125 mm
Centering ring (N)	110 mm
Hole circle (M)	130 mm
Screw-on hole (S)	9.0 mm
Overall length (LB)	154 mm
Diameter of shaft (D)	24 mm
Length of shaft (E)	50 mm
Length of flange diagonal (P)	158 mm
Shaft end	Plain shaft
Color of the housing	Standard (Anthracite, similar to RAL 7016)

