

PRO TOPDC 24V/48V 10A**Weidmüller Interface GmbH & Co. KG**

Klingenbergstraße 26

D-32758 Detmold

Germany

www.weidmueller.com



PROtop DCDC converters are used for safe electrical isolation to avoid ground loops that can occur when supplying field devices in production or process plants. DCDC converters can be used on long supply lines to refresh the supply voltage. The integrated ORing MOSFET reliably decouples possible internal short circuits. It allows direct parallel connection of ACDC and DCDC converters of the PROtop series for redundancy purposes or to increase power. This makes the use of the otherwise common diode or redundancy modules obsolete. Furthermore, PROtop DCDC converters feature the powerful DCL technology – and their communication module allows full data transparency and remote control.

General ordering data

Version	DC/DC converter
Order No.	2627660000
Type	PRO TOPDC 24V/48V 10A
GTIN (EAN)	4050118662306
Qty.	1 pc(s).

PRO TOPDC 24V/48V 10A

Weidmüller Interface GmbH & Co. KG

Klingenbergstraße 26

D-32758 Detmold

Germany

www.weidmueller.com

Technical data

Dimensions and weights

Depth	125 mm	Depth (inches)	4.921 inch
Height	130 mm	Height (inches)	5.118 inch
Width	75 mm	Width (inches)	2.953 inch
Net weight	1,746 g		

Temperatures

Storage temperature	-40 °C...85 °C	Operating temperature	-25 °C...70 °C
Humidity at operating temperature	5...95 %, no condensation	Start-up	≥ -40 °C

Input

Connection system	PUSH IN with actuator		
Current consumption in relation to the input voltage	Voltage type	DC	
	Input voltage	24 V	
	Input current	22 A	
	Voltage type	DC	
	Input voltage	18 V	
	Input current	30 A	
DC input voltage range	14 V...31.2 V (linear Derating from 18 V... 14 V, 60% rated load @ U _{in} 14 V)		
Input fuse (internal)	Yes		
Input voltage, max.	31.2 V		
Input voltage, min.	14 V		
Inrush Current Limitation	Yes		
Inrush current	max. 15 A		
Nominal power consumption	527.5 VA		
Rated input voltage	24 V DC		

Output

Connection system	PUSH IN with actuator		
DCL - peak load reserve	Boost duration	15 ms	
	Multiple of the rated current	500 %	
	Boost duration	5 s	
	Multiple of the rated current	200 %	
Mains failure bridge-over time	Mains failure bridge-over time, min.	10 ms	
	Input voltage type	DC	
	Input voltage	24 V	
	Output current	10 A	
	Output voltage	48 V	
Nominal output current for U _{nom}	10 A @ 60 °C		
Output power	480 W		
Output voltage, max.	56 V		
Output voltage, min.	45 V		
Output voltage, note	adjustable with potentiometer or comunication module		
Parallel connection option	yes, max 10		
Protection against inverse voltage	Yes		
Ramp-up time	≤ 100 ms		
Rated output voltage	48 V DC ± 1 %		

PRO TOPDC 24V/48V 10A

Weidmüller Interface GmbH & Co. KG

Klingenbergstraße 26

D-32758 Detmold

Germany

www.weidmueller.com

Technical data

General data

Adjacent	No	Conformal coating	No
Degree of efficiency	91%	Derating	> 60°C (2.5% / 1°C)
Housing version	Metal, corrosion resistant	Power loss, idling	5 W
Protection degree	IP20	Short-circuit protection	Yes
Surge voltage category	I, II, III		

EMC / shock / vibration

Interference immunity test acc. to	EN 55032:2015, EN 55035:2017, EN 61000-6-1:2007, EN 61000-6-2:2005, EN 61000-6-3:2007/ A1:2011, EN 61000-6-4:2007/ A1:2011, IEC 61000-4-2, IEC 61000-4-3, DIN EN 61000-4-4, EN 61000-4-5:2005, EN 61000-4-6:2008, IEC 61000-4-8	Noise emission in accordance with EN55032	
Shock resistance IEC 60068-2-27	30 g in all directions	Vibration resistance IEC 60068-2-6	Class B 2.3 g (on DIN rail), 4 g (with direct mounting)

Insulation coordination

Insulation voltage input / earth	1.41 kV	Insulation voltage output / earth	0.7 kV
Insulation voltage, input/output	1.41 kV	Protection class	III, with no ground connection, for SELV
Surge voltage category	I, II, III		

Electrical safety (applied standards)

Electrical machine equipment	Acc. to EN60204	For use with electronic equipment	Acc. to EN50178 / VDE0160
Protection against dangerous shock currents	Acc. to VDE0106-101	Protective separation / protection against electrical shock	VDE0100-410 / acc. to DIN57100-410
Safety extra-low voltage	SELV acc. to IEC 60950-1, PELV according to EN 60204-1	Safety transformers for switch-mode power supplies	According to EN 61558-2-17

Connection data (input)

Conductor cross-section, AWG/kcmil, max.	8 AWG	Conductor cross-section, AWG/kcmil, min.	20 AWG
Conductor cross-section, flexible, min.	0.2 mm ²	Conductor cross-section, rigid, max.	10 mm ²
Conductor cross-section, rigid, min.	0.2 mm ²	Connection system	PUSH IN with actuator
Number of terminals	2 for (+, -)	Screwdriver blade	0.6 x 3.5
Wire connection cross section, flexible (input), max.	6 mm ²		

PRO TOPDC 24V/48V 10A

Weidmüller Interface GmbH & Co. KG
 Klingenbergstraße 26
 D-32758 Detmold
 Germany

www.weidmueller.com

Technical data

Connection data (output)

Conductor cross-section, AWG/kcmil , max.	8 AWG	Conductor cross-section, AWG/kcmil , min.	20 AWG
Conductor cross-section, flexible , max.	6 mm ²	Conductor cross-section, flexible , min.	0.2 mm ²
Conductor cross-section, rigid , max.	10 mm ²	Conductor cross-section, rigid , min.	0.2 mm ²
Connection system	PUSH IN with actuator	Number of terminals	5 (+ + / - -)
Screwdriver blade	0.6 x 3.5		

Connection data (signal)

Wire connection cross-section, flexible (signal), max.	1.5 mm ²	Wire connection cross-section, flexible (signal), min.	0.14 mm ²
Wire connection method	PUSH IN	Wire cross-section, AWG/kcmil , max.	16
Wire cross-section, AWG/kcmil , min.	26 mm ²	Wire cross-section, solid , max.	1.5 mm ²
Wire cross-section, solid , min.	0.14 mm ²		

Signalling

Floating contact	LED green/red	Green: Operation (failure-free), Flashing green: advance warning I>90%, Green/red flashing: output switched off (switch-off mode), Flashing red: overload/error
Status relay (max. load)	Yes Output voltage OK (30 V DC / 1 A)	

Classifications

ETIM 6.0	EC002540	ETIM 7.0	EC002540
ETIM 8.0	EC002540	ETIM 9.0	EC002540
ETIM 10.0	EC002540	ECLASS 9.0	27-04-07-01
ECLASS 9.1	27-04-07-01	ECLASS 10.0	27-04-07-01
ECLASS 11.0	27-04-07-01	ECLASS 12.0	27-04-07-01
ECLASS 13.0	27-04-90-02	ECLASS 14.0	27-04-07-01
ECLASS 15.0	27-04-07-01		

Approvals

Approvals



Approvals MAMID

https://mdcop.weidmueller.com/mediadelivery/rendition/900_319212/-T1z1mm-S800/ https://mdcop.weidmueller.com/mediadelivery/rendition/900_319215/-T1z1mm-S800/ https://mdcop.weidmueller.com/mediadelivery/rendition/900_319226/-T1z1mm-S800/ https://mdcop.weidmueller.com/mediadelivery/rendition/900_319227/-T1z1mm-S800/ https://mdcop.weidmueller.com/mediadelivery/rendition/900_319234/-T1z1mm-S800/ https://mdcop.weidmueller.com/mediadelivery/rendition/900_319249/-T1z1mm-S800/ https://mdcop.weidmueller.com/mediadelivery/rendition/900_319255/-T1z1mm-S800/

ROHS

Conform

PRO TOPDC 24V/48V 10A

Weidmüller Interface GmbH & Co. KG
Klingenbergstraße 26
D-32758 Detmold
Germany

www.weidmueller.com

Technical data

Environmental Product Compliance

RoHS Compliance Status	Compliant with exemption
RoHS Exemption (if applicable/known)	6c, 7a, 7cl
REACH SVHC	Lead 7439-92-1
SCIP	6d8cdf22-8230-4af8-86c8-3558c716666d

Downloads

Approval/Certificate/Document of Conformity	Lloyds Register Certificate DNV Certificate.pdf RINA Certificate.pdf CSA 61010-1 Certificate.pdf C1D2 Certificate Declaration of Conformity
Engineering Data	CAD data – STEP
User Documentation	IO-Link Register Description PROtop Instruction Sheet
Catalogues	Catalogues in PDF-format

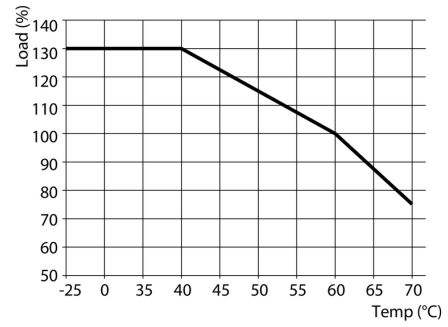
Data sheet

PRO TOPDC 24V/48V 10A

Weidmüller Interface GmbH & Co. KG
Klingenbergstraße 26
D-32758 Detmold
Germany

www.weidmueller.com

Drawings



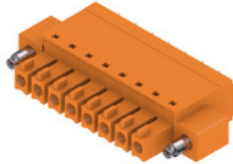
PRO TOPDC 24V/48V 10A

Weidmüller Interface GmbH & Co. KG
 Klingenbergstraße 26
 D-32758 Detmold
 Germany

www.weidmueller.com

Accessories

BCF 3.81/180F



PUSH IN - Weidmüller's innovative connection system simplifies the wire connection process.

The benefits for users and applications:

- High packaging density due to very low component height. Simply insert the prepared wire - finished
- High component density with the compact SCDN / SCDN-THR two-tier pin header
- Simplified processing due to integrated push buttons for opening the clamping unit
- Intuitive handling – since the wire-entry area and handling area are clearly separated
- tool-free locking and releasing when using Weidmüller's patented release latch (LR)

The Weidmüller plug-in connectors, pitch 3.81 mm (0.15 inch), are compatible with the layout of customary plug-in connectors, can be coded and provide space for printing.

General ordering data

Type	BCF 3.81/03/180F SN BK ...	Version	Product data	Packaging
Order No.	1347850000	PCB plug-in connector, female plug, 3.81 mm, Number of poles: 3,	IEC: 320 V / 17.5 A / 0.14 - 1.5 mm ²	Box
GTIN (EAN)	4050118152517	180°, PUSH IN with actuator, Clamping range, max. : 1.5 mm ² , Box	UL: 300 V / 10 A / AWG 26 - AWG 16	
Qty.	50 pc(s).			