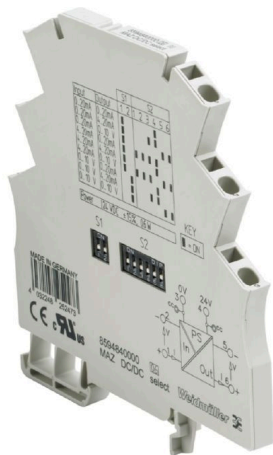


MAZ DC/DC SELECT

Weidmüller Interface GmbH & Co. KG
 Klingenbergstraße 26
 D-32758 Detmold
 Germany

www.weidmueller.com

Product image



General ordering data

Version	MICROSERIES, Signal converter/insulator
Order No.	8594840000
Type	MAZ DC/DC SELECT
GTIN (EAN)	4032248252473
Qty.	1 ST

MAZ DC/DC SELECT

Weidmüller Interface GmbH & Co. KG

Klingenbergstraße 26

D-32758 Detmold

Germany

www.weidmueller.com

Technical data

Approvals

Approvals



ROHS	Conform
UL File Number Search	UL Website
Certificate No. (cURus)	E175400
Certificate no. (cULus)	E345958
Certificate no. (cULusEX)	E346097

Dimensions and weights

Depth	97.8 mm	Depth (inches)	3.8504 inch
Width	6.1 mm	Width (inches)	0.2402 inch
Length	92 mm	Length (inches)	3.622 inch
Net weight	43 g		

Temperatures

Storage temperature	-20 °C...85 °C	Operating temperature	0 °C...55 °C
Humidity at operating temperature	0...95 % (no condensation)		

Probability of failure

SIL in compliance with IEC 61508	None	MTTF	440 a
----------------------------------	------	------	-------

Environmental Product Compliance

RoHS Compliance Status	Compliant
REACH SVHC	Lead 7439-92-1
SCIP	4c08c934-ef45-4df2-8269-ccadfff1d702

Input

Number of inputs	1	Input voltage	0...10 V
Input current	0...20 mA, 4...20 mA	Input resistance, voltage	100 kΩ
Input resistance, current	≤ 5 Ω	Voltage drop	<0.1 V @ IIN =20 mA (current input)

Output

Number of outputs	1	load impedance voltage	≥ 10 kΩ
Load impedance current	≤ 500 Ω	Output voltage, note	0...10 V
Output current	0...20 mA, 4...20 mA	Cut-off frequency (-3 dB)	> 100 Hz

General data

Accuracy	<0.5 % of end value	Protection degree	IP20
Voltage supply	24 V DC ± 15 %	Rail	TS 35
Power consumption	ca. 0.6 W	Temperature coefficient	≤ 150 ppm/K of final value
Nominal power consumption	1.5 VA		

MAZ DC/DC SELECT

Weidmüller Interface GmbH & Co. KG
 Klingenbergstraße 26
 D-32758 Detmold
 Germany

www.weidmueller.com

Technical data

Insulation coordination

EMC standards	DIN EN 61326	Surge voltage category	II
Pollution severity	2	Galvanic isolation	3-way isolator
Insulation voltage input or output/rail	500 Veff / 1 s	Insulation voltage input or output/supply	500 Veff / 1 s
Insulation voltage	500 Veff / 1 s	Rated voltage	50 V

Connection data

Type of connection	Tension-clamp connection	Clamping range, rated connection	1.5 mm ²
Clamping range, min.	0.5 mm ²	Clamping range, max.	2.5 mm ²

Classifications

ETIM 6.0	EC002653	ETIM 7.0	EC002653
ETIM 8.0	EC002653	ETIM 9.0	EC002653
ETIM 10.0	EC002653	ECLASS 9.0	27-21-01-20
ECLASS 9.1	27-21-01-20	ECLASS 10.0	27-21-01-20
ECLASS 11.0	27-21-01-20	ECLASS 12.0	27-21-01-20
ECLASS 13.0	27-21-01-20	ECLASS 14.0	27-21-01-20
ECLASS 15.0	27-21-01-20		

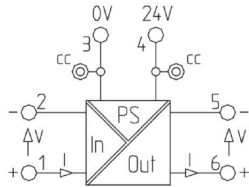
MAZ DC/DC SELECT

Weidmüller Interface GmbH & Co. KG
Klingenbergstraße 26
D-32758 Detmold
Germany

Drawings

www.weidmueller.com

Electric symbol



MAZ DC/DC SELECT

Weidmüller Interface GmbH & Co. KG
 Klingenbergstraße 26
 D-32758 Detmold
 Germany

www.weidmueller.com

Accessories

SAK-Series

SAK Series

Weidmüller's range of products includes end brackets that guarantee a permanent, reliable mounting on the terminal rail and prevent sliding. Versions with and without screws are available. The end brackets include marking options, also for group markers, and also a test plug holder.

General ordering data

Type	EW 35	Version	
Order No.	0383560000	End bracket, beige, TS 35, V-2, Wemid, Width: 8.5 mm, 100 °C	
GTIN (EAN)	4008190181314		
Qty.	50 ST		

4 mm²

4 mm²

The plug-in cross-connections feature easy handling and quick installation. This saves a great deal of time during installation in comparison with screwed solutions.

General ordering data

Type	ZQV 4N/4 RT	Version	
Order No.	1794010000	W-Series, Cross-connector, 32 A	
GTIN (EAN)	4032248233809		
Qty.	60 ST		
Type	ZQV 4N/3 RT	Version	
Order No.	1793980000	W-Series, Cross-connector, 32 A	
GTIN (EAN)	4032248233779		
Qty.	60 ST		
Type	ZQV 4N/10 BL	Version	
Order No.	1794050000	W-Series, Cross-connector, 32 A	
GTIN (EAN)	4032248234011		
Qty.	20 ST		
Type	ZQV 4N/2 RT	Version	
Order No.	1793950000	W-Series, Cross-connector, 32 A	
GTIN (EAN)	4032248233748		
Qty.	60 ST		
Type	ZQV 4N/10 SW	Version	
Order No.	1794060000	W-Series, Cross-connector, 32 A	
GTIN (EAN)	4032248234059		
Qty.	20 ST		

MAZ DC/DC SELECT

Weidmüller Interface GmbH & Co. KG
 Klingenbergstraße 26
 D-32758 Detmold
 Germany

www.weidmueller.com

Accessories

Type	ZQV 4N/41 RT	Version
Order No.	1794070000	W-Series, Cross-connector, 32 A
GTIN (EAN)	4032248234141	
Qty.	10 ST	
Type	ZQV 4N/41 SW	Version
Order No.	1794090000	W-Series, Cross-connector, 32 A
GTIN (EAN)	4032248234165	
Qty.	10 ST	
Type	ZQV 4N/2 SW	Version
Order No.	1793970000	W-Series, Cross-connector, 32 A
GTIN (EAN)	4032248233762	
Qty.	60 ST	
Type	ZQV 4N/41 BL	Version
Order No.	1794080000	W-Series, Cross-connector, 32 A
GTIN (EAN)	4032248234158	
Qty.	10 ST	
Type	ZQV 4N/10 RT	Version
Order No.	1794040000	W-Series, Cross-connector, 32 A
GTIN (EAN)	4032248234004	
Qty.	20 ST	
Type	ZQV 4N/3 SW	Version
Order No.	1794000000	W-Series, Cross-connector, 32 A
GTIN (EAN)	4032248233793	
Qty.	60 ST	
Type	ZQV 4N/4 BL	Version
Order No.	1794020000	W-Series, Cross-connector, 32 A
GTIN (EAN)	4032248233816	
Qty.	60 ST	
Type	ZQV 4N/2 BL	Version
Order No.	1793960000	W-Series, Cross-connector, 32 A
GTIN (EAN)	4032248233755	
Qty.	60 ST	
Type	ZQV 4N/3 BL	Version
Order No.	1793990000	W-Series, Cross-connector, 32 A
GTIN (EAN)	4032248233786	
Qty.	60 ST	
Type	ZQV 4N/4 SW	Version
Order No.	1794030000	W-Series, Cross-connector, 32 A
GTIN (EAN)	4032248233915	
Qty.	60 ST	

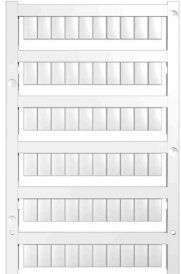
MAZ DC/DC SELECT

Weidmüller Interface GmbH & Co. KG
 Klingenbergstraße 26
 D-32758 Detmold
 Germany

www.weidmueller.com

Accessories

Blank



WS markers are the perfect match for the W-series connectors. Thanks to their system compatibility, the WS tags can also be used with the I-series and the Z-series. The large marking surfaces do not only permit long character strings but also multi-line text. WS markers are ideal for labels with long, customised character strings. Thanks to the proven MultiCard format, printing with PrintJet CONNECT oder/or Plotter is possible.

- Can be fitted in strips or individually
- Markers in proven MultiCard format

For custom printing: Please send us a file of our labeling software M-Print PRO or M-Print PRO Online (without installation) for your labeling specifications.

General ordering data

Type	WS 10/6 MC NE WS	Version
Order No.	1828450000	WS, Terminal marker, 10 x 6 mm, Pitch in mm (P): 6.00 Weidmueller,
GTIN (EAN)	4032248350513	Allen-Bradley, white
Qty.	600 ST	