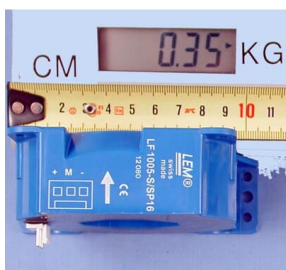




 PRODUCT-DETAILS

64572881

LF 1005-S/SP16; CURRENT TRANSDUCER



General Information

Product ID	64572881
ABB Type Designation	LF 1005-S/SP16
Catalog Description	LF 1005-S/SP16; CURRENT TRANSDUCER
Long Description	LF 1005-S/SP16

Ordering

Core Credit	0.00
Customs Tariff Number	85043129
HS Code	850431 -- ELECTRICAL MACHINERY AND EQUIPMENT AND PARTS THEREOF; SOUND RECORDERS AND REPRODUCERS, TELEVISION IMAGE AND SOUND RECORDERS AND REPRODUCERS, AND PARTS AND ACCESSORIES OF SUCH ARTICLES;Electrical transformers, static converters (for example, rectifiers) and inductors;Other transformers;Having a power handling capacity not exceeding 1kVA
Invoice Description	CURRENT TRANSDUCER
Made To Order	No
Minimum Order Quantity	1 piece
Order Multiple	1 piece

Quote Only	No
Selling Unit of Measure	piece

Dimensions

Product Net Weight	0.55 kg
Product Net Depth / Length	95 mm
Product Net Height	45 mm
Product Net Width	110 mm
Package Level 1 Depth / Length	95 mm
Package Level 1 Height	45 mm
Package Level 1 Width	110 mm
Package Level 1 Units	1 piece

Technical

Frame Size	Spare_Parts
------------	-------------

External Classifications and Standards

UNSPSC	39120000
--------	----------

Environmental

WEEE Category	Product Not in WEEE Scope
---------------	---------------------------

Where Used (as part of "kit")

Identifier	Description	Type
68257662		Kit
ACS800-02-7V3		Kit
ACS800-02V4		Kit
ACS800-104A		Kit
ACS800-104BV2		Kit
ACS800-104C		Kit
ACS800-104DV2		Kit
ACS800-104LCA		Kit
ACS800-104LCB		Kit

Categories

Drives → Services → Spares and Consumables → Parts

Drives → Services → Spares and Consumables → Parts

